



THE FUTURE
OF TORQUE TECHNOLOGY

BOLTING YOUR WORLD

TU



TU SERIES SQUARE DRIVE HYDRAULIC TORQUE WRENCH

- Eight Models From 127 lbf-ft To 58,000 lbf-ft
- Torque Accuracy Of $\pm 3\%$
- Patented Mono-Body Housing For Reduced Torsion And Flex On The Tool
- Three Moving Part Design Reduces Internal Friction
- Multi-Tooth Drive Segment Ensures A 27° Stroke With Each Full Advance
- Every Unit Calibrated In ISO17025 Laboratory

TX



TX SERIES LOW PROFILE HYDRAULIC TORQUE WRENCH

- Seven Models From 45 lbf-ft To 47,380 lbf-ft
- Torque Accuracy Of $\pm 3\%$
- Tight Nose Radius Designed For Applications With Minimal Clearance
- Patented "Peanut-Shaped" Piston
- One Pin For Link To Cylinder Engagement - No Tool Required To Swap Links
- Every Unit Calibrated In ISO17025 Laboratory

SQ



SQ SERIES SQUARE DRIVE HYDRAULIC TORQUE WRENCH

- Four Models From 127 lbf-ft To 11,000 lbf-ft
- Torque Accuracy Of $\pm 3\%$
- 360° By 180° Uni-Swivel To Accommodate Applications With Obstructions
- Patented Mono-Body Housing For Reduced Torsion And Flex On The Tool
- Three Moving Part Design Reduces Internal Friction
- Every Unit Calibrated In ISO17025 Laboratory

TXU



TXU SERIES UNI-SWIVEL LOW PROFILE HYDRAULIC TORQUE WRENCH

- Five Models From 192 lbf-ft to 35,650 lbf-ft
- Torque Accuracy Of $\pm 3\%$
- Tight Nose Radius Designed For Applications With Minimal Clearance
- Patented "Peanut-Shaped" Piston
- 360° By 180° Uni-Swivel To Accommodate Applications With Obstructions
- One Pin For Link To Cylinder Engagement - No Tool Required To Swap Links
- Every Unit Calibrated In ISO17025 Laboratory

**AP
EP**



AP/EP SERIES HYDRAULIC TORQUE WRENCH PUMPS

- Heavy Duty Permanent Magnet Motor (EP Electric)
- Heavy Duty High Flow Complement Bearing Motor (AP Air)
- All Available In 115V And 230V Models
- All Capable Of Running Up To 4 Tools Simultaneously
- Both Have Full Range Adjustability Up To 10,000 PSI / 700 Bar
- Supplied With 15' (4.6 Meter) Hydraulic Hose
- Auto Retract Valve Style

RP

RP SERIES PNEUMATIC TORQUE WRENCH

- Six Models From 78 lbf-ft To 6,000 lbf-ft
- Torque Accuracy Of +/-5%
- Lightweight Ultra-Efficient Air Motor
- Patented Planetary Gear Technology For Durability And Low Operational Temperatures
- Sealed Housing And Ergonomic Grip Ensuring Comfort And Safety
- Every Unit Calibrated In ISO17025 Laboratory

VT

VT SERIES BATTERY-POWERED TORQUE WRENCH

- Five Models From 120 lbf-ft to 3,000 lbf-ft
- Power-Driven By A Lithium Ion 8.0 Ah Re-Chargeable Battery
- Freedom And Flexibility Of Cordless Operation
- Internal Brushless Technology Delivers Efficiency And Extended Durability
- Customizable, Configurable Torque Range Capabilities
- Every Unit Calibrated In ISO17025 Laboratory

SR

SR SERIES ELECTRIC TORQUE WRENCH

- Five Models From 100 lbf-ft To 6,000 lbf-ft
- Input Voltage 100-240VAC - 50/60Hz
- Torque-Sensing Electro-Servo Motor Equipped With A Precision Angle Encoder
- Control Box With 7.5" Touchscreen Display, USB Port And 512KB Of Memory
- Patented Planetary Gear Design Which Increases Torque Multiplication
- Every Unit Calibrated In ISO17025 Laboratory

LTR

LTR SERIES BACKUP WRENCH

- Metric And Standard Sizing
- Totally Mechanical — One Moving Part
- Fits Painted And Corroded Fasteners
- Releases With Zero Tension
- Hands-Off Operation

TNS

TNS SERIES HYDRAULIC NUT SPLITTER

- Eight Models From 1/2" to 3"
- Field Replaceable Cutting Blades
- Cuts Nuts In Seconds Compared To Hours With A Torch
- Cuts Nuts Without Any Damage To Stud
- Tool Head Fits All API And ANSI Flanges





THE FUTURE OF BOLTING TECHNOLOGY

TorcUP is the result of hard work and determination by a team of individuals who are easily described as - INSPIRED! We started TorcUP in 1996 with a single wrench and the drive to become a global leader in the manufacturing of hydraulic bolting tools. Over twenty years later, we proudly offer an extensive line of the best industrial bolting products on the market to customers worldwide.

The TU Series and TX Series hydraulic wrenches are our brand's foundation and how we started a revolution. Constructed from AQ Certified Alloys and made to withstand even the harshest environments, these tools required power from a system that would match their capabilities in strength, versatility, and reliability. We answered that call with the design and release of the EP Series and AP Series "Quadra-Torc" hydraulic pumps, providing users with full range adjustability and simultaneous tool operation.

As TorcUP has evolved, our selection of products has grown to include the SQ and TXU Series Hydraulic Torque Wrenches, the RAPTOR Pneumatic Torque Wrench Series, and the STRYK Electric Torque Wrench Series. We have also developed a wide range of complementary products, most notably, the TBW Series Backup Wrench and the TNS Series Nut Splitter.

Today, we bring innovation, excellence and accuracy to a higher level with the addition of the VOLTA Battery-Powered Torque Wrench – proving once again that we set the pace, never follow! With the ever changing face of technology, TorcUP knows that our customer base seeks not just a single product supplier, but a total solution provider. The VOLTA has cemented our reputation as the "Innovator - Not The Imitator" in the bolting tool industry.

Over the last two decades, we have made it our business to look toward the future of the industry, while keeping our accessibility to customers in mind. This is why we have expanded our U.S. Sales Team and our Worldwide Distributor Network. TorcUP takes great pride in providing innovative solutions to countries such as Germany, Canada, Korea, Australia, India, China, Brazil, Spain, Italy, France, Belgium, Denmark, Norway, U.K., United Arab Emirates, Taiwan, Singapore, Malaysia, and many more. We are honored to know that we have reached farther and faster than any other bolting tool company in history.

We pledge to continue our pursuit in all that is innovative, honest and reliable. Our hope is that you, the customer, receive as many positive benefits from using TorcUP as we have from creating it. We look forward to working with you and supplying you with all your industrial bolting needs.



Our wrenches are made in the USA.





torcui

**UNCOMPLICATED
HYDRAULIC BOLTING**

TU SQUARE DRIVE TORQUE WRENCH

TU

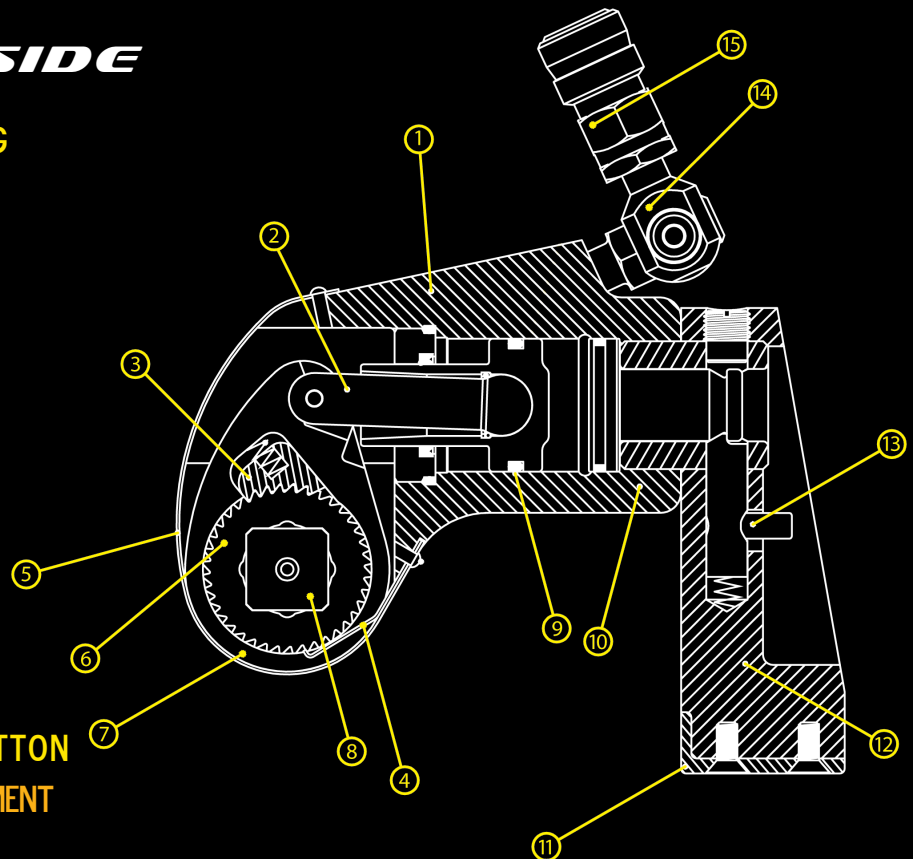
SQUARE DRIVE HYDRAULIC TORQUE WRENCH THE WRENCH WITH STYLE

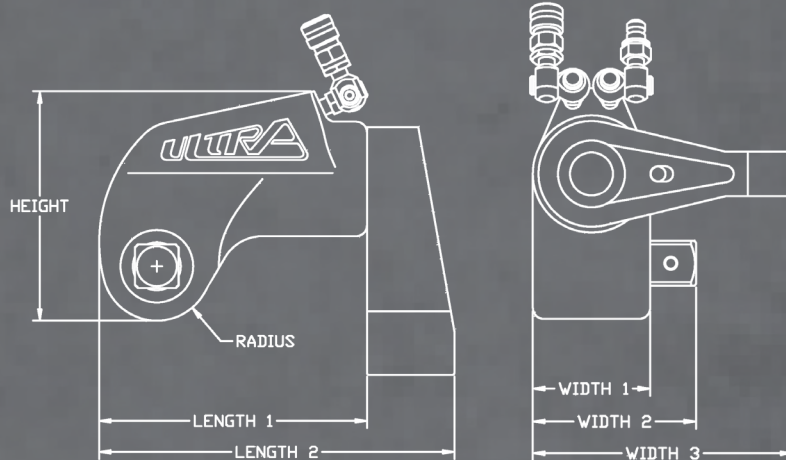
NOT ONLY DOES THE TU SERIES LOOK GOOD ... BUT IT PERFORMS GREAT!! THE "GO-TO" TOOL ON EVERY JOB-SITE IS THE TU SQUARE DRIVE HYDRAULIC WRENCH. FROM 130 FT/LBS TO 60,000 FT/LBS THE TU IS THE ONE TOOL THAT ALL CUSTOMERS KNOW WILL BE THERE WHEN THEY NEED IT. WITH ONLY THREE MOVING PARTS CONSTRUCTED FROM THE HIGHEST GRADE AEROSPACE ALLOYS, THE TU PROVIDES YEARS OF TROUBLE FREE OPERATION. WHEN IT COMES TO LUBRICATION AND PREVENTATIVE MAINTENANCE, THERE IS NO SQUARE DRIVE HYDRAULIC WRENCH COMPARABLE TO THE TU SERIES. RELIABILITY, EASE OF USE, EASE OF FITMENT ON APPLICATIONS, SIMPLE TO MAINTAIN ... THIS IS JUST THE START OF A LONG LIST OF FEATURES THAT BENEFIT THE USERS OF THE TU SERIES. AND LAST BUT NOT LEAST ... MADE IN USA!!



THE POWER INSIDE

1. PATENTED MONO-BODY HOUSING
2. BALANCED DRIVE ROD
3. MULTI-TOOTH DRIVE SEGMENT
4. ANTI-BACK LASH MECHANISM
5. LASER ENGRAVED TORQUE CHART
6. MULTI-TOOTH RATCHET
7. ONE PIECE DRIVE PLATE
8. PUSH-THROUGH DRIVE
9. SINGLE SEAL PISTON
10. DIRECT HOUSING REACTION
11. STEEL REACTION BOOT
12. LONG LENGTH REACTION ARM
13. REACTION ARM THUMB RELEASE BUTTON
14. 360° X 360° DUAL INDEPENDENT MOVEMENT
15. QUICK CONNECT NO-DRIP COUPLERS





WWW.TORCUP.COM

POWER ENGINEERED

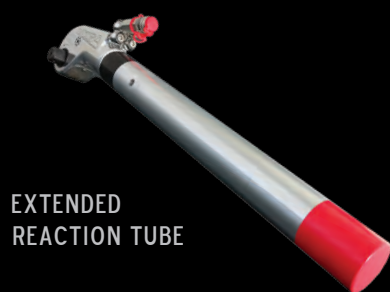
MODEL NUMBER	TU-2	TU-3	TU-5	TU-7	TU-11	TU-20	TU-27	TU-60
SQUARE DRIVE	3/4"	1"	1 1/2"	1 1/2"	1 1/2"	2 1/2"	2 1/2"	2 1/2"
MIN. TORQUE (lbf-ft)	127	330	550	740	1100	1940	2720	5800
MAX. TORQUE (lbf-ft)	1270	3330	5500	7400	11010	20625	27200	58000
MIN. TORQUE (nm)	172	447	745	1003	1491	2630	3687	7862
MAX. TORQUE (nm)	1722	4514	7457	10031	14925	27964	36872	78625
OUTPUT ACCURACY	+/-3%	+/-3%	+/-3%	+/-3%	+/-3%	+/-3%	+/-3%	+/-3%
REPEATABILITY	100%	100%	100%	100%	100%	100%	100%	100%
DUTY CYCLE	100%	100%	100%	100%	100%	100%	100%	100%
TOOL WEIGHT (lbs)	5.6	10.9	18.1	19.0	29.0	61.0	70.0	130.0
TOOL WEIGHT (kgs)	2.5	4.9	8.2	8.6	13.1	27.6	31.7	59.8
HEIGHT (in)	4.20	5.33	6.40	7.17	7.80	9.22	10.19	11.50
HEIGHT (mm)	106.7	135.3	162.6	182.1	198.1	234.3	258.8	292.1
LENGTH 1 (in)	4.82	6.40	7.91	8.84	9.79	9.44	12.32	15.38
LENGTH 1 (mm)	122.4	162.5	200.9	224.5	248.6	239.7	312.9	390.7
LENGTH 2 (in)	6.34	8.43	10.66	11.58	12.79	16.09	16.33	20.40
LENGTH 2 (mm)	161.0	214.1	270.7	294.1	324.8	408.9	414.8	518.2
RADIUS (in)	0.98	1.31	1.57	1.77	2.03	2.31	2.46	3.10
RADIUS (mm)	24.9	33.2	39.8	44.9	51.5	58.7	62.5	78.7
WIDTH 1 (in)	2.00	2.63	3.12	3.61	3.95	4.87	5.26	6.58
WIDTH 1 (mm)	50.8	66.8	79.2	91.7	100.3	123.6	133.6	167.1
WIDTH 2 (in)	2.79	3.68	4.64	5.06	5.43	7.15	7.57	8.89
WIDTH 2 (mm)	70.9	93.5	117.8	128.5	137.9	181.7	192.3	225.8
WIDTH 3 (in)	4.42	5.81	7.00	7.98	8.72	10.88	11.63	14.29
WIDTH 3 (mm)	112.3	147.6	177.8	202.7	221.5	276.4	295.4	363.0



TU

SERIES
SQUARE DRIVE
HYDRAULIC TORQUE WRENCH

DESIGN - UNIQUE AND EXCLUSIVE
DURABLE - HIGHEST GRADE ALLOYS
DEPENDABLE - ROBUST 3 MOVING PARTS



EXTENDED
REACTION TUBE



DIRECT HEX
ADAPTOR



END CAP
PROTECTOR



HOUSING
REACTION
PAD



NON PUSH THRU
SQUARE DRIVE



WIDE BOOT
REACTION ARM



Worldwide Headquarters

1025 Conroy Place
Easton, PA 18040 USA
TOLL FREE: 1-888-TorcUP-1
TELEPHONE: 1-610-250-5800
FAX: 1-610-250-2700
www.torcup.com



TU SERIES

Made In USA

Eight Models From 127 lbf-ft to
58,000 lbf-ft

Every Unit Calibrated In
ISO17025 Laboratory

Manufactured With AQ
Certified Alloys

Genuine TorcUP Design

Patented Mono-Body Housing

CARRYING
CASE





torquUI

THE SHAPE CHANGER

SQ SQUARE DRIVE TORQUE WRENCH

SQ

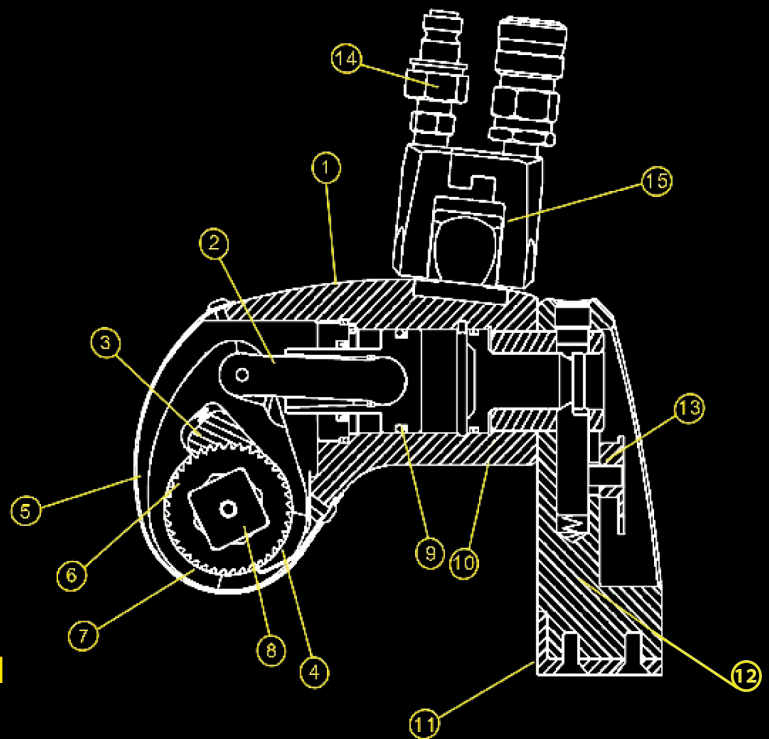
UNI-SWIVEL SQUARE DRIVE HYDRAULIC TORQUE WRENCH THE WRENCH WITH CURVES

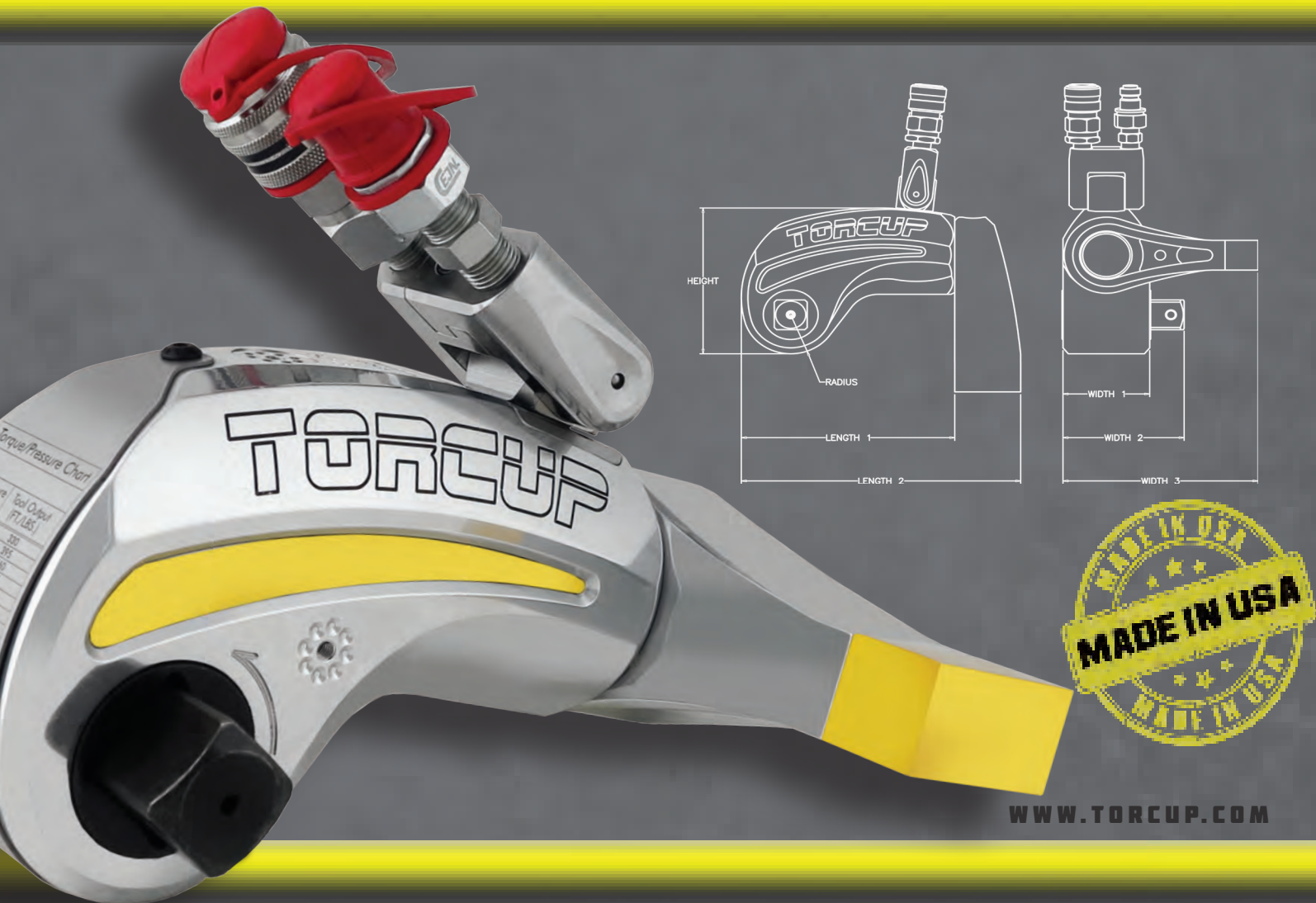
THE HYDRAULIC WRENCH WITH A SHAPE LIKE NO OTHER ... FOR A REASON! EVERY ANGLE. EVERY CURVE. EVERY FEATURE ON THE SQ SERIES IS DESIGNED WITH A PURPOSE. FROM A BLANK SHEET OF PAPER, WE TOOK 20 YEARS OF HYDRAULIC WRENCH KNOWLEDGE AND CREATED A WRENCH WITH A SHAPE WHICH IS UNIQUELY TORCUP. WITHIN THE BEAUTY OF THE SQ IS THE STRONGEST AND LONGEST TROUBLE-FREE OPERATING MECHANISM DESIGNED. THE PURPOSELY ENGINEERED THREE MOVING PARTS WITHIN THE SQ ARE THE RESULT OF 20 YEARS OF ON-SITE APPLICATION KNOWLEDGE. THE COMBINATION OF THE HIGHEST GRADE AEROSPACE ALLOYS AND FUTURISTIC MACHINING TECHNIQUES CREATE AN OUTPUT EFFICIENCY GREATER THAN ANY OTHER WRENCH ON THE MARKET. SIMPLY PUT...THERE IS NO COMPARISON TO THE SQ SERIES HYDRAULIC TORQUE WRENCH.



THE POWER INSIDE

1. PATENTED MONO-BODY HOUSING
2. BALANCED DRIVE ROD
3. MULTI-TOOTH DRIVE SEGMENT
4. ANTI-BACK LASH MECHANISM
5. LASER ENGRAVED TORQUE CHART
6. MULTI-TOOTH RATCHET
7. ONE PIECE DRIVE PLATE
8. PUSH-THROUGH DRIVE
9. SINGLE SEAL PISTON
10. DIRECT HOUSING REACTION
11. STEEL REACTION BOOT
12. LONG LENGTH REACTION ARM
13. REACTION ARM THUMB RELEASE BUTTON
14. QUICK CONNECT NO-DRIP COUPLERS
15. 180° X 360° SINGLE SWIVEL MOVEMENT





POWER ENGINEERED

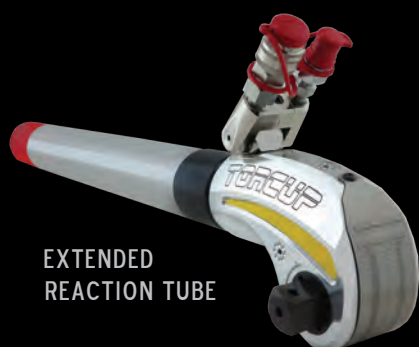
MODEL NUMBER	SQ-1	SQ-3	SQ-5	SQ-10
SQUARE DRIVE	3/4"	1"	1 1/2"	1 1/2"
MIN. TORQUE (lbf-ft)	156	379	507	956
MAX. TORQUE (lbf-ft)	1414	3515	5523	10619
MIN. TORQUE (nm)	212	515	690	1300
MAX. TORQUE (nm)	1923	4780	7511	14443
OUTPUT ACCURACY	+/-3%	+/-3%	+/-3%	+/-3%
REPEATABILITY	100%	100%	100%	100%
DUTY CYCLE	100%	100%	100%	100%
TOOL WEIGHT (lbs)	5.5	11.0	18.5	32.0
TOOL WEIGHT (kgs)	2.5	5.0	8.4	14.5
HEIGHT (in)	3.76	4.91	6.05	7.34
HEIGHT (mm)	95.5	124.7	153.6	186.4
LENGTH 1 (in)	4.91	6.48	7.95	9.85
LENGTH 1 (mm)	124.7	164.5	201.9	250.1
LENGTH 2 (in)	6.47	8.48	10.70	12.85
LENGTH 2 (mm)	164.3	215.3	271.7	326.3
RADIUS (in)	0.99	1.31	1.57	2.13
RADIUS (mm)	25.1	33.2	39.8	54.1
WIDTH 1 (in)	2.0	2.63	3.13	3.95
WIDTH 1 (mm)	50.8	66.8	79.5	100.3
WIDTH 2 (in)	2.75	3.68	4.64	5.47
WIDTH 2 (mm)	69.8	93.5	117.8	138.9
WIDTH 3 (in)	4.61	5.92	7.0	8.74
WIDTH 3 (mm)	117.0	150.3	177.8	222.0



SQ

SERIES UNI-SWIVEL
SQUARE DRIVE
HYDRAULIC TORQUE WRENCH

UNIQUE - THE SHAPE THAT FITS
ENDURING - 20 YEARS OF ENGINEERING
ADAPTABLE - ACCESSORIES FOR EVERYWHERE



SQ SERIES

Made In USA

Only Three Moving Parts

Every Unit Calibrated In Our
ISO17025 Laboratory

Manufactured With AQ
Certified Alloys

Uni-Swivel Hose Maneuverability

Genuine TorcUP Design

TorcUP

Worldwide Headquarters

1025 Conroy Place

Easton, PA 18040 USA

TOLL FREE: 1-888-TorcUP-1

TELEPHONE: 1-610-250-5800

FAX: 1-610-250-2700

www.torcup.com



CARRYING
CASE





TorcuP

**A TOOL WITH
MULTIPLE PERSONALITIES**

TX LOW PROFILE TORQUE WRENCH

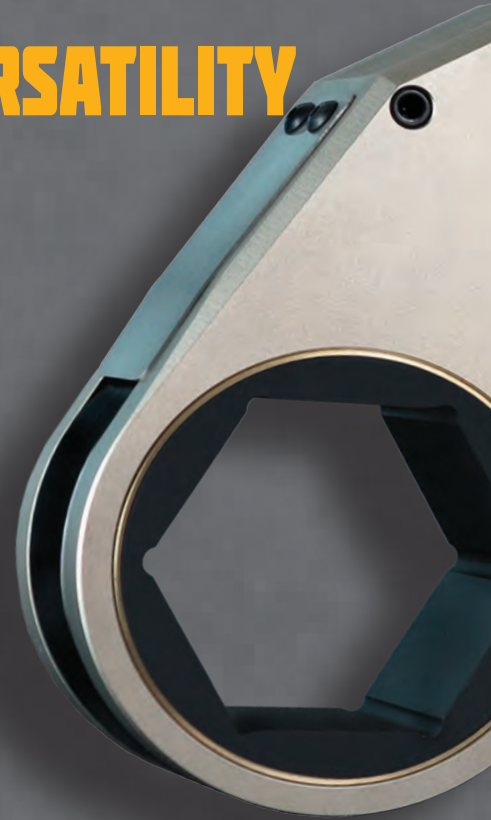
TX

LOW PROFILE HYDRAULIC TORQUE WRENCH

THE WRENCH WITH VERSATILITY

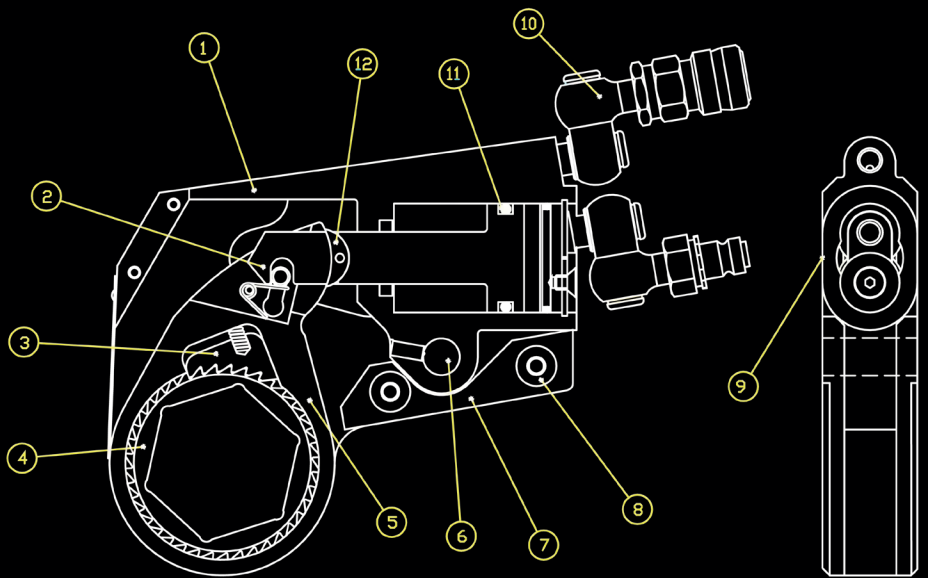
THE WORLD'S MOST CHALLENGING BOLTING JOBS REQUIRE A HYDRAULIC TORQUE WRENCH THAT CAN GO "FLAT OUT." APPLICATIONS WITH RESTRICTIONS ABOVE, AROUND AND BEHIND THE NUT DEMAND A TOOL THAT CAN GET FLAT AND GET ON THE JOB. THE TX SERIES WAS THE FIRST FLAT HYDRAULIC WRENCH TO CONQUER ALL LIMITATIONS ... AND THEN SOME!!

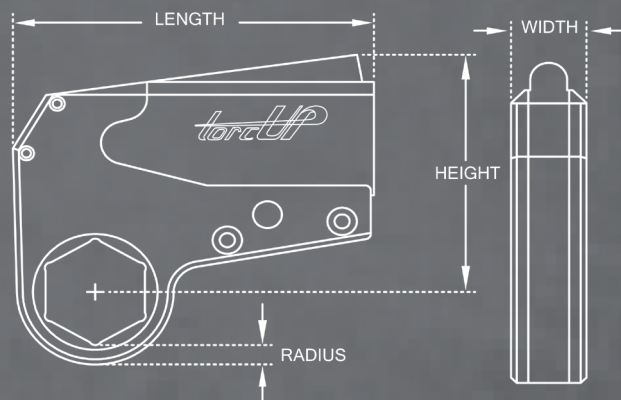
INDUSTRY NOT ONLY REQUIRES A TOOL THAT GETS IN ... BUT ONE THAT WORKS BEYOND THE JOB-SITE EXPECTATION. WITH 20 YEARS OF PROVEN SUCCESS IN THE HARSHTEST ENVIRONMENTS, THE ONLY WRENCH TRULY CAPABLE OF GOING "FLAT OUT" IS THE TORCUP TX SERIES.



THE POWER INSIDE

1. PATENTED "PEANUT-SHAPED" CYLINDER
2. ENGAGEMENT ROD
3. NEVER-LOCK DRIVE PAWL
4. MULTI-TOOTH RATCHET
5. ONE PIECE DRIVE PLATE
6. LINK PIN
7. IN-LINE REACTION PAD
8. STEEL ALIGNMENT PIN
9. COMPLETELY FLAT DESIGN
10. 360° X 360° SWIVEL
11. PROPRIETARY PISTON SEAL
12. SLIDER PREVENTS WEAR OF PISTON

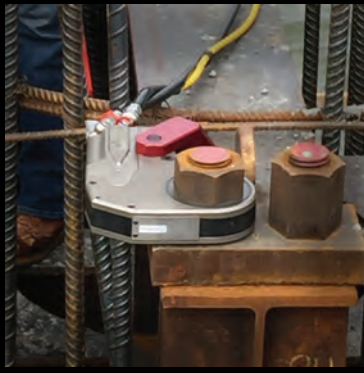




WWW.TORCUP.COM

POWER ENGINEERED

MODEL NUMBER	TX-1	TX-2	TX-4	TX-8	TX-16	TX-32	TX-45
MIN. TORQUE (lbf-ft)	45	192	395	830	1560	3220	4850
MAX. TORQUE (lbf-ft)	560	1928	3950	8630	16600	35650	47380
MIN. TORQUE (nm)	61	260	535	1125	2115	4365	6575
MAX. TORQUE (nm)	759	2614	5355	11699	22503	48327	64239
OUTPUT ACCURACY	+/-3%	+/-3%	+/-3%	+/-3%	+/-3%	+/-3%	+/-3%
REPEATABILITY	100%	100%	100%	100%	100%	100%	100%
DUTY CYCLE	100%	100%	100%	100%	100%	100%	100%
CYLINDER WEIGHT (lbs)	1.0	3.5	6.0	11.7	16.0	26.0	29.0
CYLINDER WEIGHT (kgs)	0.5	1.6	2.7	5.0	7.3	11.5	13.0
LINK WEIGHT FROM (lbs)	1.0	2.4	5.4	11.9	21.0	29.0	29.0
LINK WEIGHT TO (lbs)	1.0	3.5	7.6	14.5	28.0	39.5	39.5
LINK WEIGHT FROM (kgs)	0.45	1.0	2.4	5.5	9.5	13.0	13.0
LINK WEIGHT TO (kgs)	0.45	1.5	3.4	6.5	13.0	17.9	17.9
LENGTH (in)	4.37	6.45	7.87	10.18	12.93	15.80	16.75
LENGTH (mm)	111.0	163.8	199.9	258.6	328.4	401.3	425.5
WIDTH (in)	0.78	1.25	1.63	2.05	2.50	3.24	4.88
WIDTH (mm)	19.8	31.8	41.4	52.1	63.5	82.3	124.0
RADIUS RANGE FROM (in)	0.24	0.37	0.41	0.56	0.68	0.96	0.96
RADIUS RANGE TO (in)	0.45	0.59	0.77	0.93	1.68	1.82	1.82
RADIUS RANGE FROM (mm)	6.2	9.6	10.5	14.2	17.1	24.3	24.3
RADIUS RANGE TO (mm)	11.4	15.0	18.7	21.0	25.9	44.2	44.2
HEIGHT (in)	3.25	4.0	5.6	7.0	7.58	9.5	10.28
HEIGHT (mm)	82.6	101.6	142.2	177.8	192.5	241.3	261.1
HEX RANGE FROM	1/2"/13mm	3/4"/19mm	1"/27mm	1 7/8"/49mm	2 3/16"/55mm	3 1/8"/80mm	3 1/8"/80mm
HEX RANGE TO	2"/50mm	2 9/16"/65mm	3 1/8"/80mm	4 5/8"/120mm	5 5/16"/135mm	7 7/8"/200mm	7 7/8"/200mm



TX SERIES LOW PROFILE HYDRAULIC TORQUE WRENCH

FLAT - ACCESS THE INACCESSIBLE
PROVEN - USED ON JOB-SITES WORLDWIDE
SUPERIOR - AIRCRAFT QUALITY ALLOY

LOW POINT
REACTION PADDLE



CLOSED SPANNER
WRENCH



INLINE
REACTION
ARM



TOOL HANDLE



HEX TO SQUARE
DRIVE ADAPTOR



HEX REDUCER



Worldwide Headquarters

1025 Conroy Place
Easton, PA 18040 USA
TOLL FREE: 1-888-TorcUP-1
TELEPHONE: 1-610-250-5800
FAX: 1-610-250-2700

www.torcup.com



TX SERIES

Made In USA

Seven Models From 45 lbf-ft to
64,000 lbf-ft

Every Unit Calibrated In
ISO17025 Laboratory

Manufactured With AQ
Certified Alloys

Genuine TorcUP Design

CARRYING
CASE





Torqu-Lip

THE ALL

AROUND SOLUTION

TXU LOW PROFILE TORQUE WRENCH

TXU

UNI-SWIVEL LOW PROFILE HYDRAULIC TORQUE WRENCH

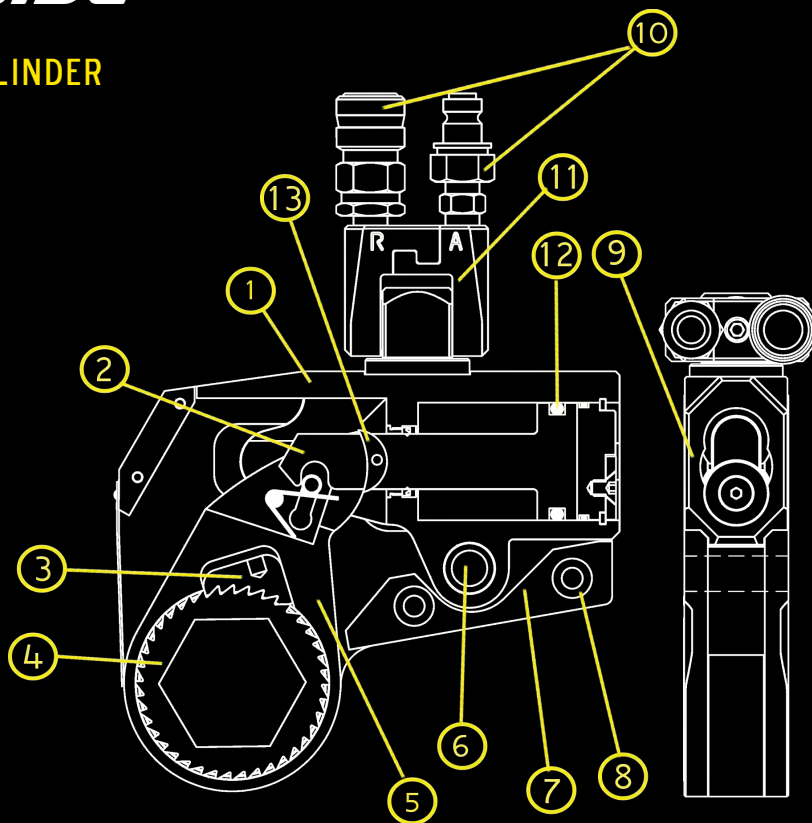
THE WRENCH WITH A TWIST

NOT ONLY IS THE WRENCH ITSELF ROTATABLE AROUND EVERY APPLICATION ... SO IS THE UNI-SWIVEL. WE RE-WROTE THE BOOK WITH THE TXU WHEN IT COMES TO BEING THE MOST VERSATILE LIMITED CLEARANCE HYDRAULIC WRENCH. EVERY COMPONENT IS ENGINEERED FOR HIGH-TORQUE PERFORMANCE AND DURABILITY TO DELIVER JOB-SITE RESULTS ACCURATELY AND ON SCHEDULE. THE TXU IS THE ONLY TOOL IN THE JOB BOX THAT WILL GIVE YOU FREEDOM WHEN FACED WITH LIMITATIONS.



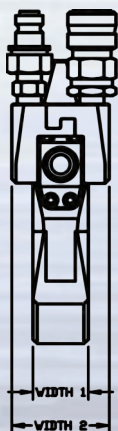
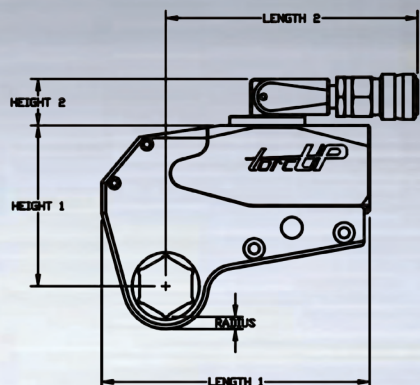
THE POWER INSIDE

1. PATENTED "PEANUT-SHAPED" CYLINDER
2. ENGAGEMENT ROD
3. NEVER-LOCK DRIVE PAWL
4. MULTI-TOOTH RATCHET
5. ONE PIECE DRIVE PLATE
6. LINK PIN
7. IN-LINE REACTION PAD
8. STEEL ALIGNMENT PIN
9. COMPLETELY FLAT DESIGN
10. QUICK CONNECT COUPLERS
11. 180° X 360° UNI-SWIVEL
12. PROPRIETARY PISTON SEAL
13. SLIDER PREVENTS WEAR OF PISTON





WWW.TORCUP.COM



POWER ENGINEERED

MODEL NUMBER	TXU-2	TXU-4	TXU-8	TXU-16
MIN. TORQUE (lbf-ft)	192	395	830	1560
MAX. TORQUE (lbf-ft)	1928	3950	8630	16600
MIN. TORQUE (nm)	260	535	1125	2115
MAX. TORQUE (nm)	2614	5355	11699	22503
CYLINDER WEIGHT (lbs)	4.0	6.9	12.5	16
CYLINDER WEIGHT (kg)	1.8	3.1	5.7	7.3
LINK WEIGHT FROM (lbs)	2.4	5.4	11.9	21.0
LINK WEIGHT TO (lbs)	3.5	7.6	14.5	28.0
LINK WEIGHT FROM (kgs)	1.0	2.4	5.5	9.5
LINK WEIGHT TO (kgs)	1.5	3.4	6.5	13.0
LENGTH 1 (in)	6.45	7.87	10.18	12.93
LENGTH 1 (mm)	163.8	199.9	258.6	328.4
LENGTH 2 (in)	5.99	6.58	7.34	8.2
LENGTH 2 (mm)	152.4	167.1	186.4	208.2
WIDTH 1 (in)	1.25	1.63	2.05	2.5
WIDTH 1 (mm)	31.8	41.4	52.1	63.5
WIDTH 2 (in)	2.19	2.26	2.26	2.26
WIDTH 2 (mm)	55.6	57.4	57.4	57.4
RADIUS RANGE FROM (in)	0.37	0.41	0.56	0.68
RADIUS RANGE TO (in)	0.59	0.77	0.93	1.68
RADIUS RANGE FROM (mm)	9.6	10.5	14.2	17.1
RADIUS RANGE TO (mm)	15.0	18.7	21.0	25.9
HEIGHT 1 (in)	3.39	4.93	6.18	7.58
HEIGHT 1 (mm)	86.3	125.2	157	192.5
HEIGHT 2 (in)	1.11	1.30	1.30	1.30
HEIGHT 2 (mm)	28.2	33.0	33.0	33.0
HEX RANGE FROM	3/4"/19mm	1"/27mm	1 7/8"/49mm	2 3/16"/55mm
HEX RANGE TO	2 9/16"/65mm	3 1/8"/80mm	4 5/8"/120mm	5 5/16"/135mm



TXU

SERIES UNI-SWIVEL
LOW PROFILE
HYDRAULIC TORQUE WRENCH

ADAPT - IN CONFINED AREAS
ADJUST - AROUND 360 DEGREES
ANTICIPATE - ALL POSITIONAL OBSTRUCTIONS

LOW POINT
REACTION PADDLE



BOX END
SPANNER WRENCH



INLINE REACTION
ARM



TOOL HANDLE



HEX TO SQUARE
DRIVE ADAPTER



HEX REDUCER



Worldwide Headquarters

1025 Conroy Place
Easton, PA 18040 USA
TOLL FREE: 1-888-TorcUP-1
TELEPHONE: 1-610-250-5800
FAX: 1-610-250-2700
www.torcup.com



TXU SERIES

Made In USA

Four Models From 192 lbf-ft to
16,000 lbf-ft

Every Unit Calibrated In
ISO17025 Laboratory

Manufactured With AQ
Certified Alloys

Genuine TorcUP Design

CARRYING
CASE





torquii

**FITTING IN
WHERE OTHERS DON'T**

TX SLIMLINE RATCHET LINK

SL

TX SERIES SLIMLINE LINKS FIT INTO THE FUTURE



TECHNICAL DATA TX-4

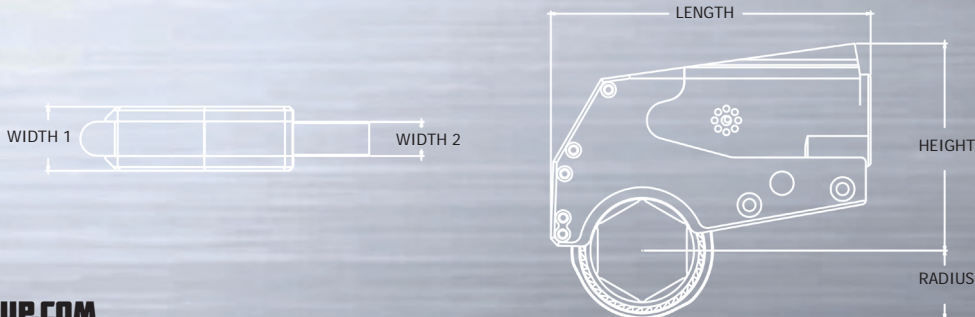
MIN TORQUE (lbf-ft)	395
MAX TORQUE (lbf-ft)	3300
MIN TORQUE (nm)	535
MAX TORQUE (nm)	4470
OUTPUT ACCURACY	+/-3%
REPEATABILITY	100%
DUTY CYCLE	100%
CYLINDER WEIGHT (lbs)	6.0
CYLINDER WEIGHT (kgs)	2.7
LINK WEIGHT FROM (lbs)	5.1
LINK WEIGHT FROM (kgs)	2.3
LINK WEIGHT TO (lbs)	7.1
LINK WEIGHT TO (kgs)	3.2



DIMENSIONAL DATA TX-4

POWER ENGINEERED

Hex Range (in)	Hex Range (mm)	Length (in)	Length (mm)	Height (in)	Height (mm)	Width 1 (in)	Width 1 (mm)	Width 2 (in)	Width 2 (mm)	Radius (in)	Radius (mm)
1-1 5/8	27-41	8.51	216.15	5.57	141.48	1.63	41.40	0.88	22.35	1.43	36.32
1 11/16-1 13/16	42-46	8.51	216.15	5.57	141.48	1.63	41.40	0.88	22.35	1.53	38.86
1 7/8-2	47-50	8.51	216.15	5.57	141.48	1.63	41.40	0.88	22.35	1.67	42.42
2 1/16-2 3/16	51-55	8.51	216.15	5.57	141.48	1.63	41.40	0.88	22.35	1.78	45.21
2 1/4-2 3/8	56-60	8.58	217.93	5.57	141.48	1.63	41.40	0.88	22.35	1.90	48.26
2 7/16-2 9/16	61-65	8.69	220.73	5.57	141.48	1.63	41.40	0.88	22.35	2.00	50.80
2 5/8-2 3/4	66-70	8.76	222.50	6.01	152.65	1.63	41.40	0.88	22.35	2.11	53.59
2 13/16-2 15/16	71-75	8.86	225.04	6.01	152.65	1.63	41.40	0.88	22.35	2.24	56.90
3-3 1/8	76-80	8.94	227.08	6.01	152.65	1.63	41.40	0.88	22.35	2.35	59.69



WWW.TORCUP.COM

TorcUP Inc. 1025 Conroy Place Easton, PA. 18040 USA 1-888-TorcUP-1 +1 610-250-5800

www.torcup.com sales@torcup.com

TorcUP products are subject to continual development and TorcUP reserves the right to make changes to the specifications and design of their products without prior notice. All rights are reserved. Reproduction in whole or in part without permission of TorcUP Inc. is prohibited.

torcUIP

**FITTING IN
WHERE OTHERS DON'T**



TX SQUARE DRIVE RATCHET LINK

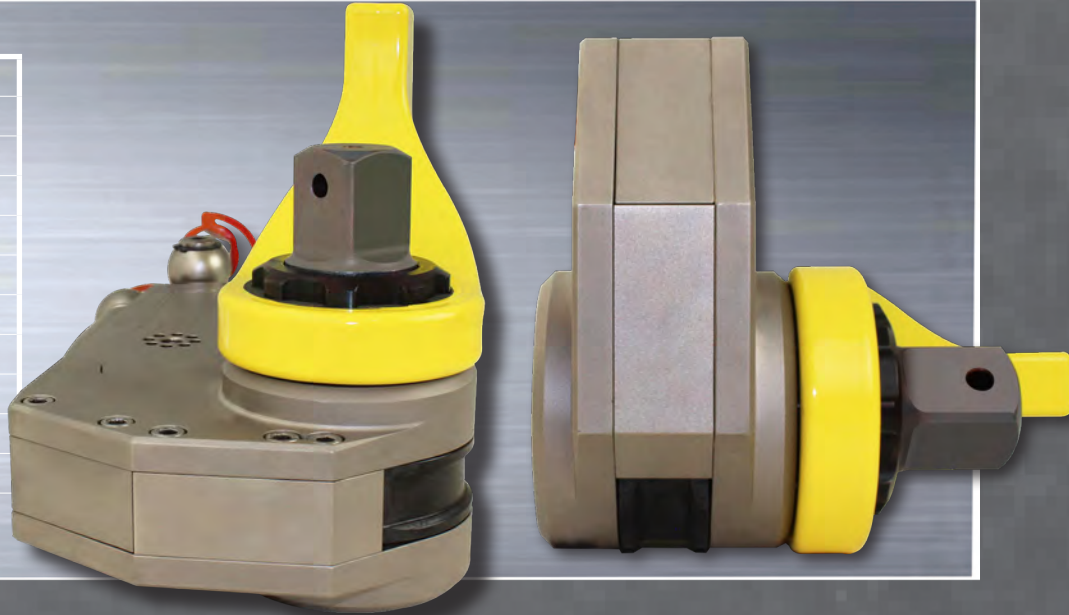
SDL

TX SERIES SQUARE DRIVE LINK THE DRIVING TORQUE



TECHNICAL DATA TX-4

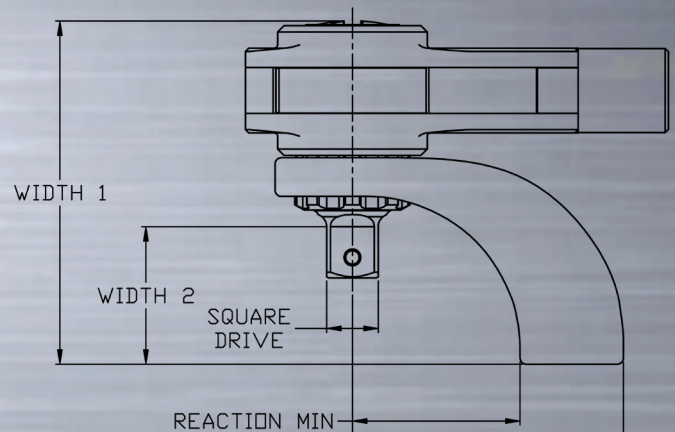
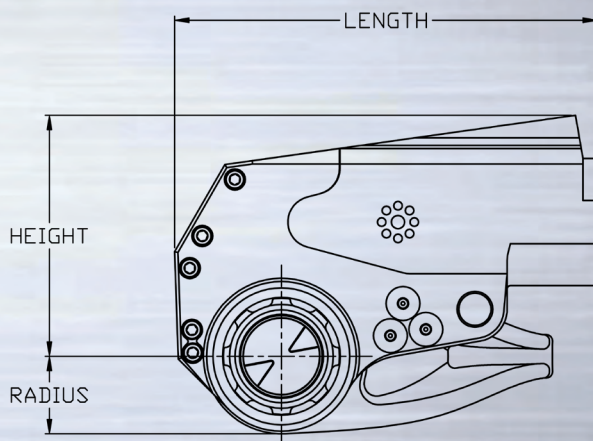
MIN TORQUE (ft-lbs)	293
MAX TORQUE (ft-lbs)	2934
MIN TORQUE (nm)	397.3
MAX TORQUE (nm)	3978
OUTPUT ACCURACY	+/-3%
REPEATABILITY	100%
DUTY CYCLE	100%
CYLINDER WEIGHT (lbs)	6.0
CYLINDER WEIGHT (kgs)	2.7
LINK WEIGHT (lbs)	9
LINK WEIGHT (kgs)	4.1



DIMENSIONAL DATA TX-4

Length (in)	Length (mm)	Height (in)	Height (mm)	Width 1 (in)	Width 1 (mm)	Width 2 (in)	Width 2 (mm)	Radius (in)	Radius (mm)	Square Drive	Reaction (Min)	Reaction (Max)
8.20	208.3	4.67	118.6	6.67	169.4	2.55	67.6	1.43	36.32	1"	3.41	5.16

POWER ENGINEERED



WWW.TORCUP.COM

TorcUP Inc. 1025 Conroy Place Easton, PA. 18040 USA 1-888-TorcUP-1 +1 610-250-5800

www.torcup.com sales@torcup.com

TorcUP products are subject to continual development and TorcUP reserves the right to make changes to the specifications and design of their products without prior notice. All rights are reserved. Reproduction in whole or in part without permission of TorcUP Inc. is prohibited.



Torcu

**SPANNING EVEN
THE TIGHTEST GAPS**

TX SPANNER WRENCHES

SX

TX SERIES SPANNER WRENCHES WHEN SPACE MATTERS



TX-2 Series (in)		A Width 0.674	B Width 1.250	C Width 0.340
Spanner	Hex Size	D Width		
TX-2SWB104	1 1/4"	0.443		
TX-2SWB107	1 7/16"	0.459		
TX-2SWB110	1 5/8"	0.474		
TX-2SWB113	1 13/16"	0.489		
TX-2SWB200	2"	0.504		
TX-2SWB203	2 3/16"	0.520		
TX-2SWB206	2 3/8"	0.534		
TX-2SWB209	2 9/16"	0.550		

TX-2 Series (mm)		A Width 17.12	B Width 31.75	C Width 8.64
Spanner	Hex Size	D Width		
TX-2SWB32M	32mm	0.447		
TX-2SWB36M	36mm	0.461		
TX-2SWB41M	41mm	0.477		
TX-2SWB46M	46mm	0.493		
TX-2SWB50M	50mm	0.492		
TX-2SWB55M	55mm	0.504		

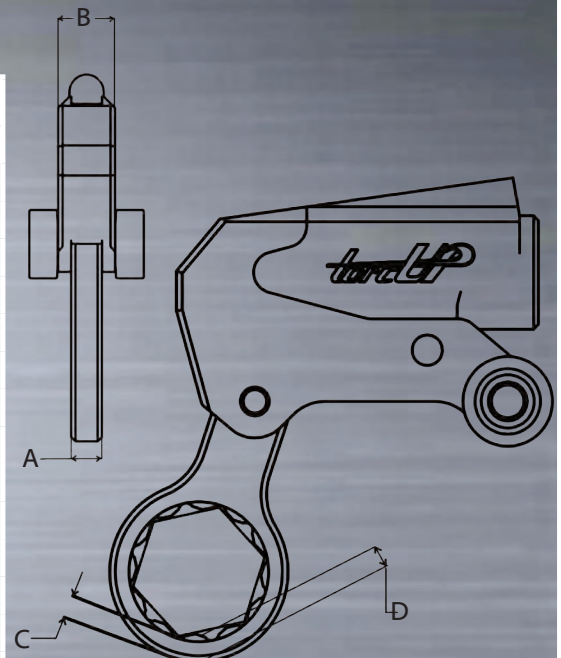
TX-2 Series (mm) con't		
Spanner	Hex Size	D Width
TX-2SWB60M	60mm	0.538
TX-2SWB65M	65mm	0.522

TX-4 Series (in)		A Width 0.875	B Width 1.626	C Width 0.500
Spanner	Hex Size	D Width		
TX-4SWB104	1 1/4"	0.603		
TX-4SWB107	1 7/16"	0.619		
TX-4SWB110	1 5/8"	0.634		
TX-4SWB113	1 13/16"	0.649		
TX-4SWB200	2"	0.664		
TX-4SWB203	2 3/16"	0.680		
TX-4SWB206	2 3/8"	0.694		
TX-4SWB209	2 9/16"	0.710		
TX-4SWB212	2 3/4"	0.725		
TX-4SWB215	2 15/16"	0.740		
TX-4SWB302	3 1/8"	0.754		

TX-4 Series (mm)		A Width 22.23	B Width 41.30	C Width 12.70
Spanner	Hex Size	D Width		
TX-4SWB32M	32mm	0.607		
TX-4SWB36M	36mm	0.621		
TX-4SWB41M	41mm	0.637		
TX-4SWB46M	46mm	0.653		
TX-4SWB50M	50mm	0.664		
TX-4SWB55M	55mm	0.682		
TX-4SWB60M	60mm	0.698		
TX-4SWB65M	65mm	0.712		
TX-4SWB70M	70mm	0.728		
TX-4SWB75M	75mm	0.745		
TX-4SWB80M	80mm	0.760		

POWER ENGINEERED

TX-8 Series (in)			TX-8 Series (mm)		
Spanner	Hex Size	D Radius	Spanner	Hex Size	D Radius
TX-8SWB200	2"	0.775	TX-8SWB50M	50mm	0.775
TX-8SWB203	2 3/16"	0.791	TX-8SWB55M	55mm	0.793
TX-8SWB206	2 3/8"	0.805	TX-8SWB60M	60mm	0.809
TX-8SWB209	2 9/16"	0.821	TX-8SWB65M	65mm	0.823
TX-8SWB212	2 3/4"	0.836	TX-8SWB70M	70mm	0.839
TX-8SWB215	2 15/16"	0.851	TX-8SWB75M	75mm	0.856
TX-8SWB302	3 1/8"	0.865	TX-8SWB80M	80mm	0.871
TX-8SWB305	3 5/16"	0.881	TX-8SWB85M	85mm	0.887
TX-8SWB308	3 1/2"	0.896	TX-8SWB90M	90mm	0.902
TX-8SWB311	3 11/16"	0.911	TX-8SWB95M	95mm	0.918
TX-8SWB312	3 3/4"	0.917	TX-8SWB100M	100mm	0.932
TX-8SWB314	3 7/8"	0.927	TX-8SWB105M	105mm	0.951
TX-8SWB315	3 15/16"	0.931	TX-8SWB110M	110mm	0.965
TX-8SWB402	4 1/8"	0.946	TX-8SWB115M	115mm	0.981
TX-8SWB404	4 1/4"	0.957	TX-8SWB120M	120mm	0.994
TX-8SWB410	4 5/8"	0.987			



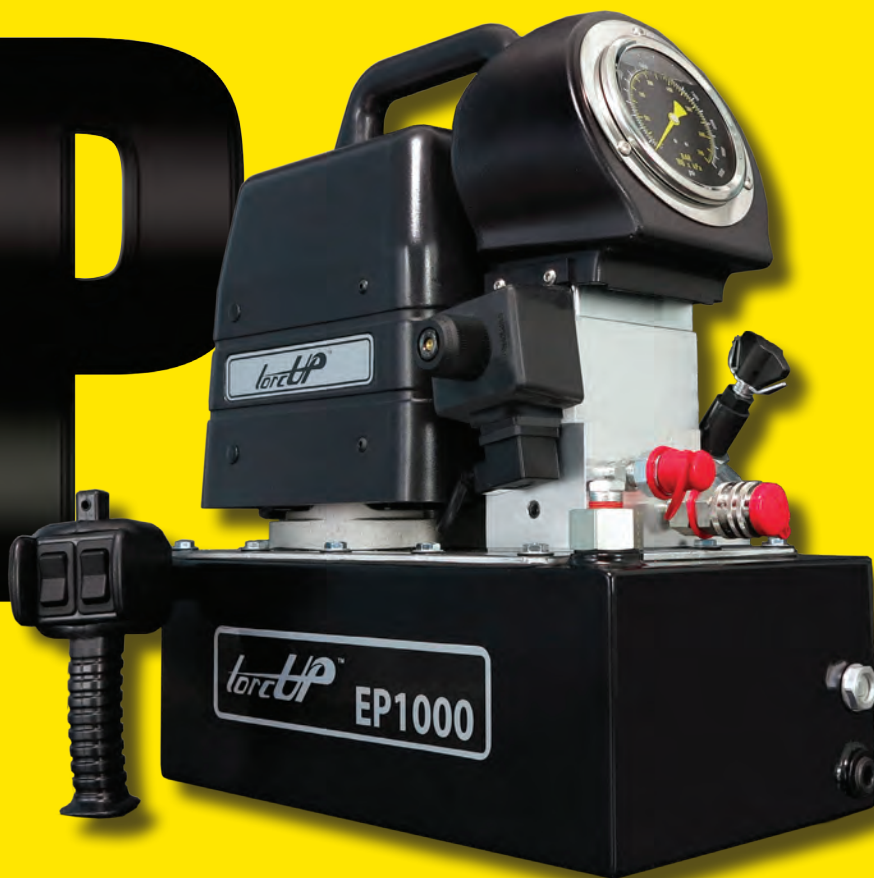
WWW.TORCUP.COM

TorcUP Inc. 1025 Conroy Place Easton, PA. 18040 USA 1-888-TorcUP-1 +1 610-250-5800

www.torcup.com sales@torcup.com

TorcUP products are subject to continual development and TorcUP reserves the right to make changes to the specifications and design of their products without prior notice. All rights are reserved. Reproduction in whole or in part without permission of TorcUP Inc. is prohibited.

EP



AP

torcUP
STRENGTH

UNDER PRESSURE

EP/AP HYDRAULIC PUMPS

EP

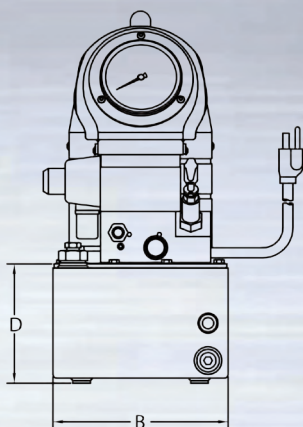
ELECTRIC HYDRAULIC TORQUE WRENCH PUMP

ELECTRIC PERFORMANCE

THE EP SERIES HYDRAULIC TORQUE WRENCH PUMP IS MANUFACTURED TO WITHSTAND HARSH ENVIRONMENTS AND HEAVY DUTY APPLICATIONS. ADJUST THE PRESSURE TO THE DESIRED PSI/BAR TO ACHIEVE PROPER TORQUE OUTPUT EACH AND EVERY TIME. WHETHER RUNNING ONE TOOL OR FOUR, THE EP SERIES PUMPS ARE THE POWER THAT GUARANTEES THE JOB WILL GET DONE.



Dimensions	All dimensions are the same for 230v models		
	EP500	EP1000	EP1000-Q
A (in/mm)	13.0/330	15.0/381	17.0/432
B (in/mm)	8.2/208	8.7/221	9.7/246
C (in/mm)	19.0/483	19.0/483	19.0/483
D (in/mm)	5.7/145	5.9/150	5.9/150



Technical Data

Reservoir Capacity
(gal/litre)

Valve Style

Motor Specification

Flow Rate @ 1,100psi

Flow Rate @ 10,000psi

Weight (lbs/kg)

AMPS

EP500

1.0/3.8

Auto Retract

1.125 HP @ 115VAC
Single Phase

525 cu.in./min.

48 cu.in./min.

59.0/26.8

12-13

EP1000

1.5/5.7

Auto Retract

1.5 HP @ 115VAC
Single Phase

700 cu.in./min.

55 cu.in./min.

74.0/33.6

17-18

EP1000-Q

2.5/9.5

Auto Retract

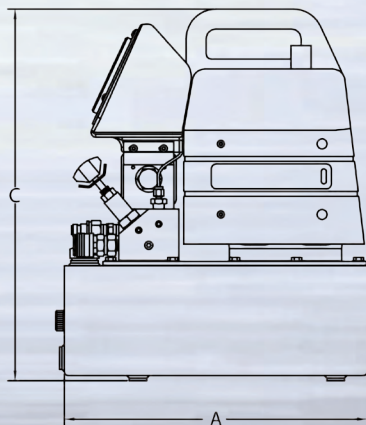
1.5HP @ 115VAC
Single Phase

700 cu.in./min.

55 cu.in./min.

81.0/36.7

17-18



Technical Data

Reservoir Capacity
(gal/litre)

Valve Style

Motor Specification

Flow Rate @ 75 bar

Flow Rate @ 700 bar

Weight (lbs/kg)

AMPS

EP500-230V

1.0/3.8

Auto Retract

1.125 HP @ 230VAC
Single Phase

8.6 litres/min

.79 litres/min.

59.0/26.8

12-13

EP1000-230V

1.5/5.7

Auto Retract

1.5 HP @ 230VAC
Single Phase

11.5 litres/min.

.9 litres/min.

74.0/33.6

17-18

EP1000-Q-230V

2.5/9.5

Auto Retract

1.5 HP @ 230VAC
Single Phase

11.5 litres/min.

.9 litres/min.

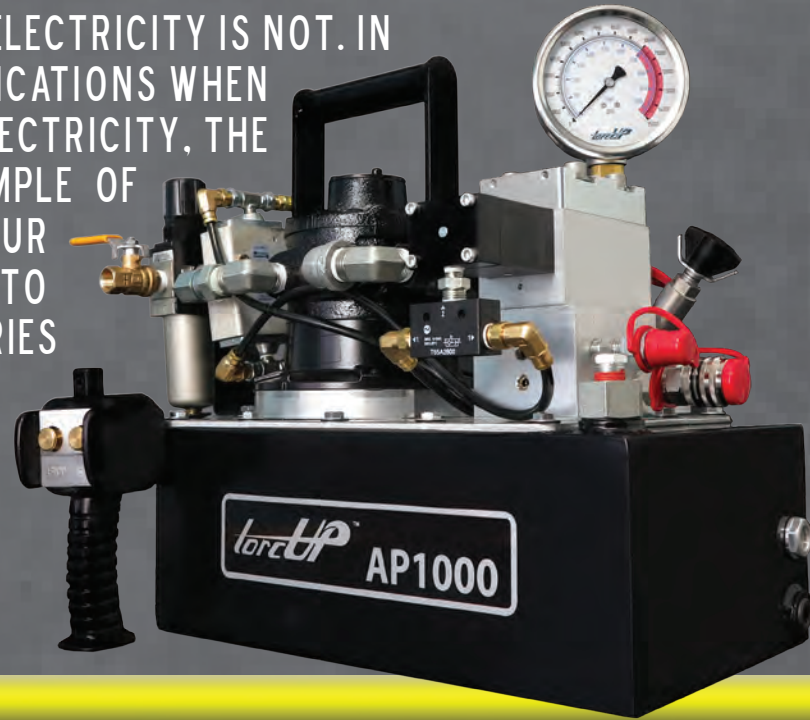
81.0/36.7

17-18

AP

AIR HYDRAULIC TORQUE WRENCH PUMP PNEUMATIC PERFORMANCE

THE AP SERIES IS THERE FOR YOU WHEN ELECTRICITY IS NOT. IN EXPLOSIVE ENVIRONMENTS OR ON APPLICATIONS WHEN AIR IS MORE READILY AVAILABLE THAN ELECTRICITY, THE AP SERIES PUMPS ARE ANOTHER EXAMPLE OF TORCUP'S ATTENTION TO THE NEEDS OF OUR CUSTOMERS. CAPABLE OF RUNNING UP TO FOUR TOOLS SIMULTANEOUSLY, THE AP SERIES BRINGS SAFETY TO YOUR APPLICATION.

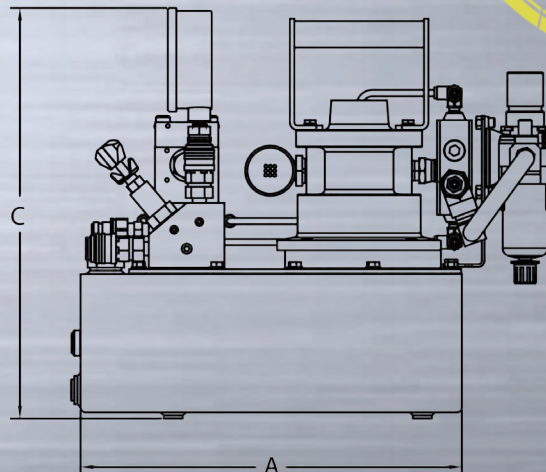
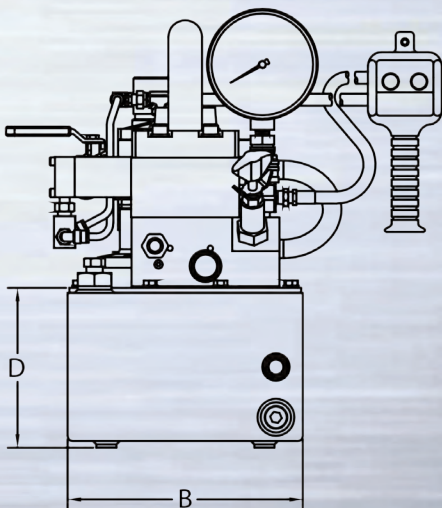


Dimensions AP1000 / AP1000-Q

A (in/mm)	15.0/381
B (in/mm)	8.7/221
C (in/mm)	16.0/406
D (in/mm)	5.9/150

Technical Data

	AP1000	AP1000-Q
Reservoir Capacity (gal/litre)	1.5 / 5.7	1.5/ 5.7
Valve Style	Auto Retract	Auto Retract
Motor Specification	4 HP @ 90 psi/ 50 cfm	4 HP @ 90 psi/ 50 cfm
Flow Rate	700 cu.in./min. @ 1,100psi	700 cu.in./min. @1,100psi
Weight (lbs/kg)	67/30.4	68/30.9



EP/AP

HYDRAULIC TORQUE
WRENCH PUMP
ACCESSORIES

ADAPT - TO THE HARSHTEST ENVIROMENTS

ADJUST - PRESSURE AS NEEDED

ANTICIPATE - JOB-SITE OBSTACLES



FOOT SWITCH



SHIPPING CASE



HEAT EXCHANGER



TWIN LINE
HYDRAULIC HOSE



GAUGE



ROLL CAGE



OFFSHORE
STORAGE CASE

TorUP

Worldwide Headquarters

1025 Conroy Place

Easton, PA 18040 USA

TOLL FREE: 1-888-TorUP-1

TELEPHONE: 1-610-250-5800

FAX: 1-610-250-2700

www.torcup.com



EP/AP PUMPS

Made In USA

Heavy Duty Hydraulic Torque
Wrench Pumps

Gauges Calibrated In
ISO17025 Laboratory

Manufactured With AQ
Certified Alloys

Genuine Torcup Design

MULTI-PORT
ADAPTOR KIT





TorqueUp
TORQUE AT
SUPER VELOCITY

SV AUTOCYCLE PUMP

SV

SV SERIES SUPER VELOCITY PUMP TORQUE WITH SPEED



THE SV1000 IS THE PERFECT SYNTHESIS OF CONTINUOUS SPEED RATCHETING AND POWER TO TORQUE. THIS INDUSTRIAL PUMP SUCCEEDS IN COMBINING ALL THAT IS DESIRED IN A HYDRAULIC TORQUE WRENCH PUMP ... AND MORE!

SPEED

- Simple "Tool Speed" Selector
- Advanced Electronic Circuitry To Maximize Speed
- Pendant Controlled "Auto Cycle" and "Torque Cycle"
- Continuous Rotation Tool-Specific Run Down Operation

DURABILITY

- Rugged and Secure Roll Cage
- Removable 4" PSI / BAR Gauge
- Clydesdale 2 Stage High Pressure Pump
- Powerful 1.5 HP Permanent Magnet Motor
- Completely Enclosed Motor Housing & Electronics

SAFETY

- Low Voltage Operator Pendant
- Auto Dump Pressure Relief Valve
- Rugged Roll Cage With Lifting Points
- Quick Disconnect Couplers With 3:1 Safety Rating
- Supplied With Dual Non-Conductive 15' Hose



PUSH BUTTON TOOL SELECTION FOR
TORCUP TU AND TX WRENCHES

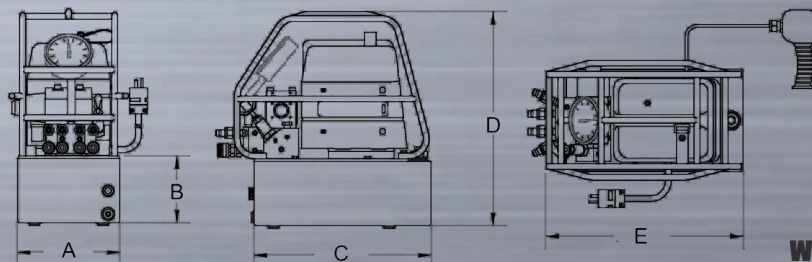
ERGONOMIC

- Low Profile / No Tip Design
- Hand Grip Remote Pendant
- Industrial Membrane Switch Tool Selector
- Sight Glass For Monitoring Oil Reservoir Level

POWER ENGINEERED

Usable Reservoir Capacity		A		B		C		D		E	
(Gal.)	(litre)	(in)	(mm)	(in)	(mm)	(in)	(mm)	(in)	(mm)	(in)	(mm)
1.5	5.7	8.75	222.25	5.96	151.38	15.13	384.3	18.1	459.74	16.85	427.99

Model Number	Reservoir		Valve			Pendant	Motor Specification	Flow Rate	Weight	
	Gal.	Litre	Model	Style	Function				lbs.	Kg
SV1000	1.5	5.7	Torque	Auto Retract	Advance/Retract	Motor/ Solenoid Control	1.5 HP @ 115VAC Single Phase	700 cu.in./min. @ 1,100 psi 55 cu.in./min. @ 10,000psi (9.4 litres/min. @ 75 bar 0.9/min. @ 700 bar)	65.75	29.8
SV1000-230V							1.5 HP @ 230VAC Single Phase		65.75	29.8



WWW.TORCUP.COM

TorcUP Inc. 1025 Conroy Place Easton, PA. 18040 USA 1-888-TorcUP-1 +1 610-250-5800
www.torcup.com sales@torcup.com

TorcUP products are subject to continual development and TorcUP reserves the right to make changes to the specifications and design of their products without prior notice. All rights are reserved. Reproduction in whole or in part without permission of TorcUP Inc. is prohibited.



lip
torque
CONTROL AND
TRACK TORQUE

SR ELECTRONIC TORQUE WRENCH

SR

ELECTRONIC TORQUE WRENCH

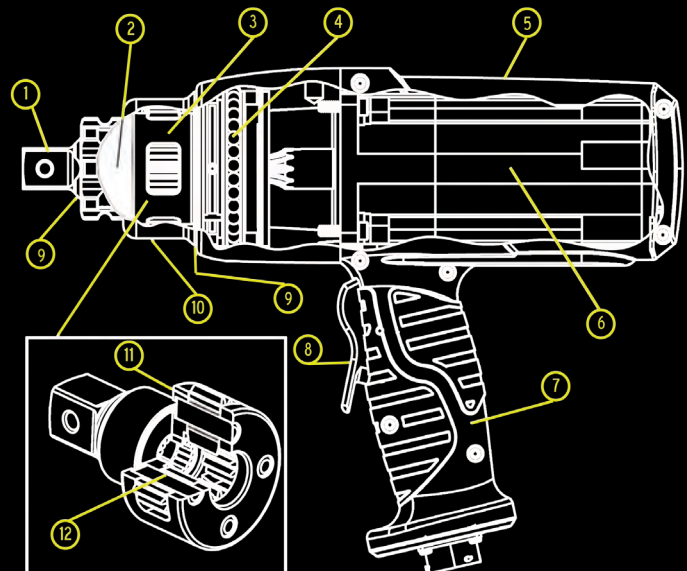
THE WRENCH WITH CONTROL

THROUGH THE USE OF INTEGRATED ENCODERS, BOTH TORQUE AND TORQUE-ANGLE CONTROL ARE AVAILABLE AT THE TOUCH OF THE SCREEN. ANGLE CONTROL IS AVAILABLE IN BOTH TIGHTEN AND LOOSEN DIRECTIONS FOR A TOTAL SOLUTION TO YOUR ENGINEERED SPECIFICATIONS. BY UTILIZING THE SAME GEAR TRAIN DESIGN AS OUR LEGENDARY RP SERIES, THE STRYK OUTPERFORMS ALL OTHER METHODS IN LONG-TERM RELIABILITY, AS WELL AS MECHANICAL REPEATABILITY. SIMPLY PUT, THIS IS THE MOST DURABLE ELECTRONIC TORQUE WRENCH SERIES EVER PRODUCED!



THE POWER INSIDE

1. HARDENED ALLOY STEEL FOR DURABILITY AND LONG CYCLE LIFE
2. BEARINGS SUPPORT THE LOADS EXPERIENCED AT THE SQUARE DRIVE
3. MULTI-STAGE PLANETARY GEAR SYSTEM WITH OPTIMIZED TOOTH DESIGN
4. SMOOTH BALL BEARING ROTATION OF THE GEARBOX HOUSING INDEPENDENT FROM THE MOTOR HANDLE
5. HANDLE HOUSING CONSTRUCTED OF DURABLE IMPACT RESISTANT NYLON THAT REMAINS COOL TO THE TOUCH
6. THE ELECTRIC-SERVO MOTOR IS EQUIPPED WITH A PRECISION ANGLE ENCODER AND IS CAPABLE OF OPERATING AT 115V OR 230V
7. ERGONOMIC HANDLE DESIGN OF THE SR SERIES DESIGNED TO ALLOW FOR A FIRM COMFORTABLE GRIP
8. ONE FINGER TRIGGER CONTROL FOR FORWARD AND REVERSE
9. O-RINGS SEAL GREASE IN WHILE KEEPING WATER AND DIRT OUT
10. ROBUST GEARBOX
11. GEARS RUN ON LOW FRICTION. HIGH STRENGTH BEARING SLEEVES
12. TOOL STEEL PINS IN EACH GEAR STAGE CARRIER





SR-500 **SINGLE SPEED**
TORQUE RANGE 100-500 LBF-FT
FREE SPEED 2.6-25.8 RPM



SR-1000 **SINGLE SPEED**
TORQUE RANGE 200-1000 LBF-FT
FREE SPEED 2-10 RPM



SR-2000 **SINGLE SPEED**
TORQUE RANGE 400-2000 LBF-FT
FREE SPEED 3-6 RPM



SR-3000 **SINGLE SPEED**
TORQUE RANGE 600-3000 LBF-FT
FREE SPEED 1.4-2.8 RPM

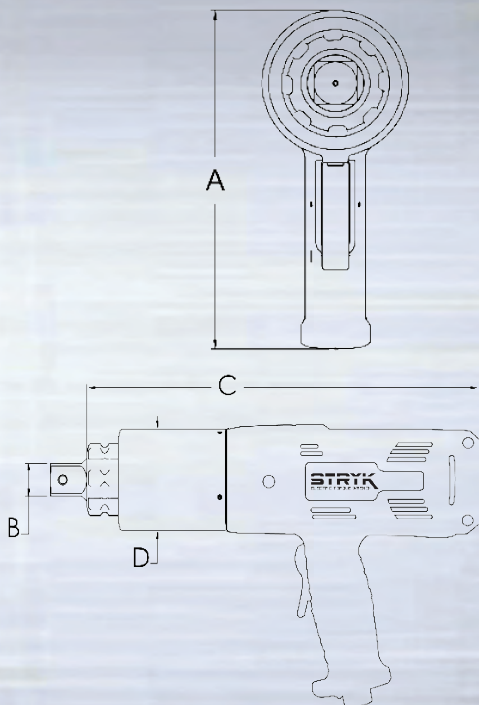


SR-6000 **SINGLE SPEED**
TORQUE RANGE 1200-6000 LBF-FT
FREE SPEED 1.9 RPM

POWER CORD IS NOT INCLUDED WITH TOOL. ORDER POWER CORD RELATIVE TO YOUR VOLTAGE REQUIREMENTS

WWW.TORCUP.COM

POWER ENGINEERED



MODEL NUMBER	SR-500	SR-1000	SR-2000	SR-3000	SR-6000
SQUARE DRIVE	3/4"	1"	1"	1"	1 1/2"
MIN. TORQUE (lbf-ft)	100	200	400	600	1200
MAX. TORQUE (lbf-ft)	500	1000	2000	3000	6000
MIN. TORQUE (nm)	136	271	542	813	1627
MAX. TORQUE (nm)	678	1356	2712	4067	8135
HEIGHT A (in)	9.29"	9.29"	9.29"	9.31"	9.94"
HEIGHT A (mm)	236.0	236.0	236.0	236.5	252.5
SQUARE DRIVE B (in)	0.75"	1"	1"	1"	1.5"
SQUARE DRIVE B (mm)	19.05	25.4	25.4	25.4	38.1
LENGTH C (in)	11.45"	13.23"	13.94"	16.18"	16.88"
LENGTH C (mm)	290.8	336.0	354.1	411.0	428.8
DIAMETER D (in)	2.56"	2.85"	3.09"	3.75"	5.0"
DIAMETER D (mm)	65.0	72.4	78.5	95.3	127.0
WEIGHT (lbs) w/o arm	10.9	14.0	15.6	22.3	38.3
WEIGHT (kg) w/o arm	4.9	6.4	7.1	10.1	17.4
PERFORMANCE MAX (rpm)	25	10	6	3	2
CONTROL BOX (lbs/kgs)	20.0/9.07				
POWER CABLE (lbs/kgs)	1.65/.75				
DATA CABLE (lbs/kgs)	5.3/2.4				



SR SERIES ELECTRONIC TORQUE WRENCH

ACCURATE - A TRUE TORQUE INSTRUMENT
INDUSTRIAL - BUILT FOR EXTENDED DAILY USE
ACCOUNTABLE - FOR TORQUE / ANGLE / APPLICATION



TOOL HANDLE
NOSE EXTENSION



LONG EXTENDED
REACTION ARM



STRYK CONTROLLER UNIT

7.5" TFT Graphic Touchscreen

20 foot encoder cable with
abrasion resistant braided
cable sleeve included. Display
Resolution: 640 x 480 Pixels
Memory - 306KB of 512KB total

Input Voltage: 100-240 VAC /
50/60 Hz

Dimensions: 12.1" x 14.8" x 9.6"

Weight: 20 lbs / 9.07 kg

STRAIGHT
REACTION ARM



SLIDING STRAIGHT
REACTION ARM



Worldwide Headquarters

1025 Conroy Place

Easton, PA 18040 USA

TOLL FREE: 1 888-TorcUP-1

TELEPHONE: +1 610-250-5800

FAX: +1 610-250-2700

www.torcup.com



CARRYING
CASE

TorcUP products are subject to continual development and TorcUP reserves the right to make changes to the specifications and design of their products without prior notice. All rights are reserved. Reproduction in whole or in part without permission of TorcUP Inc. is prohibited.



RP
torc

**GEARING UP FOR
THE REVOLUTION**

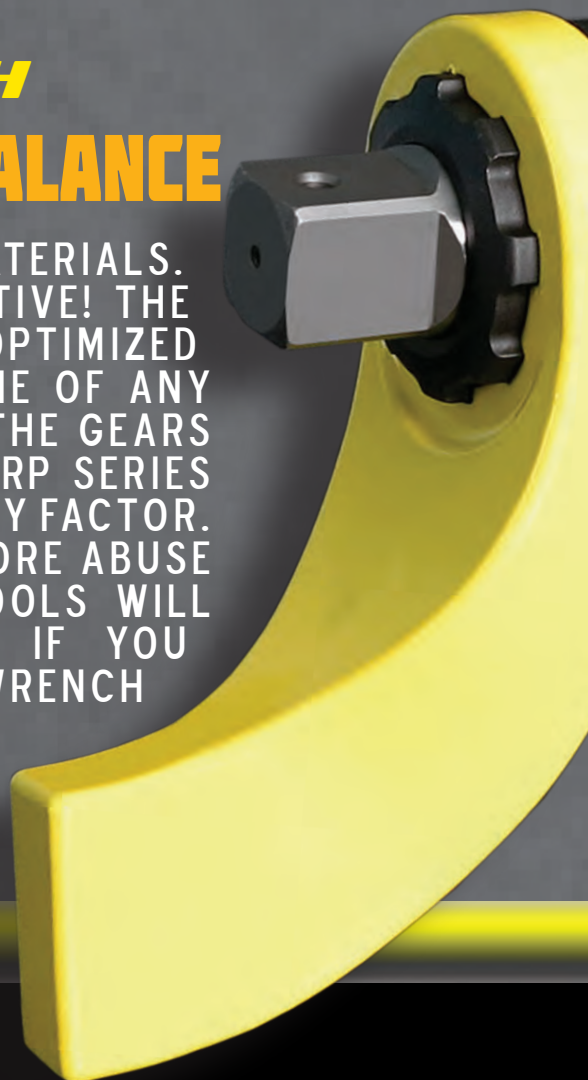
RP PNEUMATIC TORQUE WRENCH

RP

PNEUMATIC TORQUE WRENCH

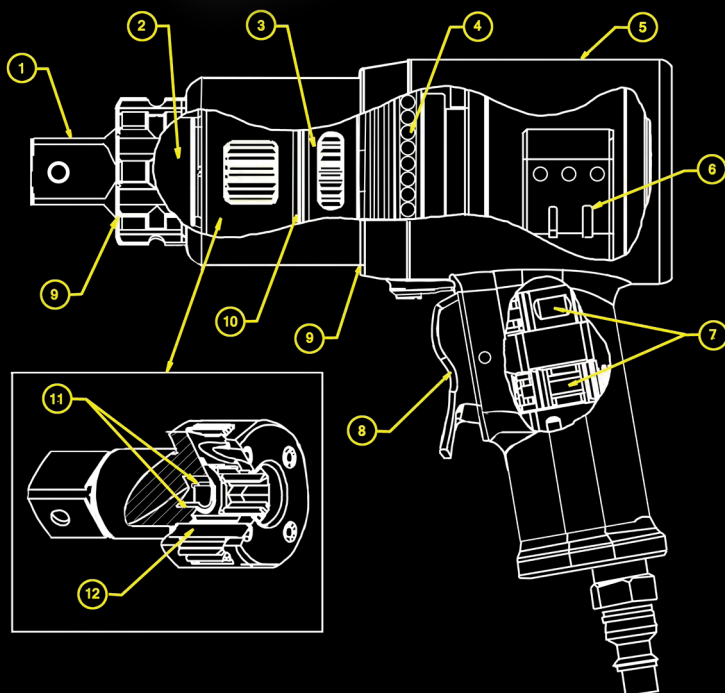
THE WRENCH WITH BALANCE

REDESIGNING THE GEAR. OPTIMIZING THE MATERIALS. PERFECTING THE FIT. THAT WAS OUR OBJECTIVE! THE RESULT IS A PNEUMATIC WRENCH THAT IS OPTIMIZED DOWN TO THE FINEST DETAIL. THE BACKBONE OF ANY PNEUMATIC TORQUE WRENCH IS ITS GEARS. THE GEARS THAT ARE THE DRIVING FORCE BEHIND THE RP SERIES ARE DESIGNED WITH AN INCREASED DURABILITY FACTOR. THE FULL LINE OF RAPTORs HAVE ENDURED MORE ABUSE FROM LONG TERM TESTING THAN THESE TOOLS WILL EVER EXPERIENCE IN THE FIELD. IF YOU REQUIRE A PNEUMATIC TORQUE WRENCH THAT WILL BE THERE FOR YOU ON THE JOB, LOOK NO FURTHER THAN THE TORCUP RAPTOR!



THE POWER INSIDE

1. HARDENED ALLOY STEEL FOR DURABILITY AND LONG CYCLE LIFE
2. BEARINGS SUPPORT THE LOADS EXPERIENCED AT THE SQUARE DRIVE
3. MULTI-STAGE PLANETARY GEAR SYSTEMS WITH OPTIMIZED TOOTH DESIGN
4. SMOOTH BALL BEARING ROTATION OF THE GEARBOX HOUSING INDEPENDENT FROM THE MOTOR HANDLE
5. LIGHTWEIGHT ALUMINUM HANDLE WITH DURABLE, SLIP-RESISTANT TEXTURED COATING
6. ULTRA-EFFICIENT AIR MOTOR DESIGNED FOR EASY MAINTENANCE
7. CARTRIDGE-STYLE VALVES PROVIDE EASY REPLACEMENT
8. ONE FINGER TRIGGER CONTROL FOR FORWARD AND REVERSE
9. O-RINGS SEAL GREASE IN WHILE KEEPING WATER AND DIRT OUT
10. THRUST BEARING BETWEEN STAGES ISOLATE THE MOTOR WHEN USED IN ALL ORIENTATIONS
11. GEARS RUN ON LOW FRICTION. HIGH STRENGTH BEARING SLEEVES
12. TOOL STEEL PINS IN EACH STAGE CARRIER





RP-500 **SINGLE SPEED**
TORQUE RANGE 78-530 LBF-FT
FREE SPEED 16.5-44 RPM



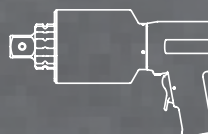
RP-1000 **SINGLE SPEED**
TORQUE RANGE 148-1030 LBF-FT
FREE SPEED 7-15 RPM



RP-2000 **SINGLE SPEED**
TORQUE RANGE 231-2015 LBF-FT
FREE SPEED 3.5-9 RPM



RP-3000 **SINGLE SPEED**
TORQUE RANGE 484-3070 LBF-FT
FREE SPEED 1.75-4 RPM

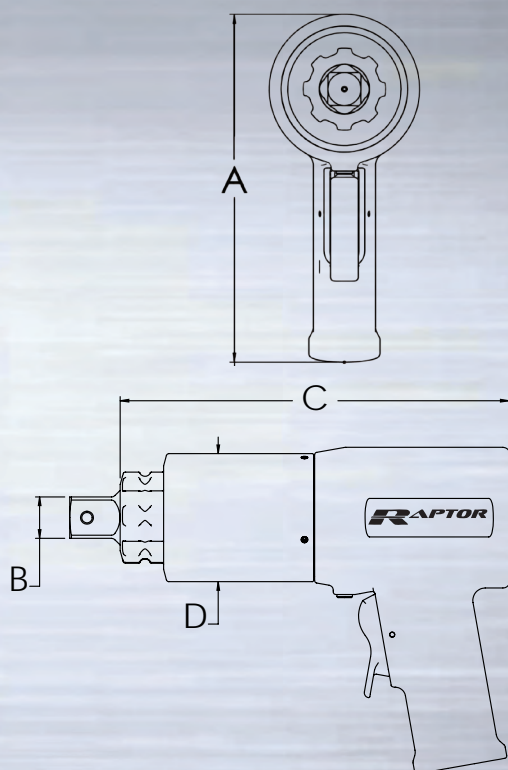


RP-6000 **SINGLE SPEED**
TORQUE RANGE 714-6000 LBF-FT
FREE SPEED 1.25-3 RPM

Requirements: Air Pressure 10-90 psi - Flow 45-55 CFM

WWW.TORCUP.COM

POWER ENGINEERED



MODEL NUMBER	RP-500	RP-1000	RP-2000	RP-3000	RP-6000
SQUARE DRIVE	3/4"	1"	1"	1"	1 1/2"
MIN. TORQUE (lbf-ft)	78	148	231	484	714
MAX. TORQUE (lbf-ft)	530	1030	2015	3070	6000
MIN. TORQUE (nm)	106	201	313	656	968
MAX. TORQUE (nm)	719	1396	2732	4162	8121
HEIGHT A (in)	7.89"	7.89"	7.89"	8.06"	8.69"
HEIGHT A (mm)	200.4	200.4	200.4	204.7	220.7
SQUARE DRIVE B (in)	0.75"	1"	1"	1"	1.5"
SQUARE DRIVE B (mm)	19.05	25.4	25.4	25.4	38.1
LENGTH C (in)	6.80"	8.87"	9.40"	11.62"	12.32"
LENGTH C (mm)	172.7	225.3	238.8	295.2	312.9
DIAMETER D (in)	2.56"	2.85"	3.09"	3.75"	5.00"
DIAMETER D (mm)	65.0	72.4	78.5	95.3	127.0
WEIGHT (lbs) w/o arm	9	12	16	20	36
WEIGHT (kg) w/o arm	4.1	5.4	7.3	9.1	16.3
PERFORMANCE DATA					
RPM @ 10 psi	16.5	7	3.5	1.75	1.25
RPM @ MAX psi	44	15	9	4	3
TOOL MAX psi	80	70	90	65	90



RP

SERIES PNEUMATIC TORQUE WRENCH

SPEED - WE REVOLUTIONIZE THROUGH EFFICIENCY!
WEIGHT - WE CUT WEIGHT WITHOUT SACRIFICING DURABILITY!
STRENGTH - WE KNOW HOW TO MAKE ALLOYS PERFORM!

SLIDING STRAIGHT
REACTION ARM



STRAIGHT
REACTION ARM



LONG EXTENDED
REACTION ARM



NOSE
EXTENSION



F/R/L UNIT



MULTI POSITION
HANDLE



Worldwide Headquarters

1025 Conroy Place

Easton, PA 18040 USA

TOLL FREE: 1-888-TorcUP-1

TELEPHONE: 1-610-250-5800

FAX: 1-610-250-2700

www.torcup.com



RP-F/R/L

Control torque output

Air pressure measured with PSI/
BAR liquid filled gauge

Adjustable lubricator for proper
"Air Tool Oil" drip.

Ergonomic F/R/L frame in safety
yellow with hose storage.

Dimensions:

Width 9" Height 12" Length 12"

Weight 12.0 lbs / 5.4 kg

CARRYING
CASE





torclip

**TAKE CHARGE
OF YOUR BOLTING**

VT BATTERY TORQUE WRENCH

VT

BATTERY TORQUE WRENCH

THE WRENCH THAT CHANGED EVERYTHING

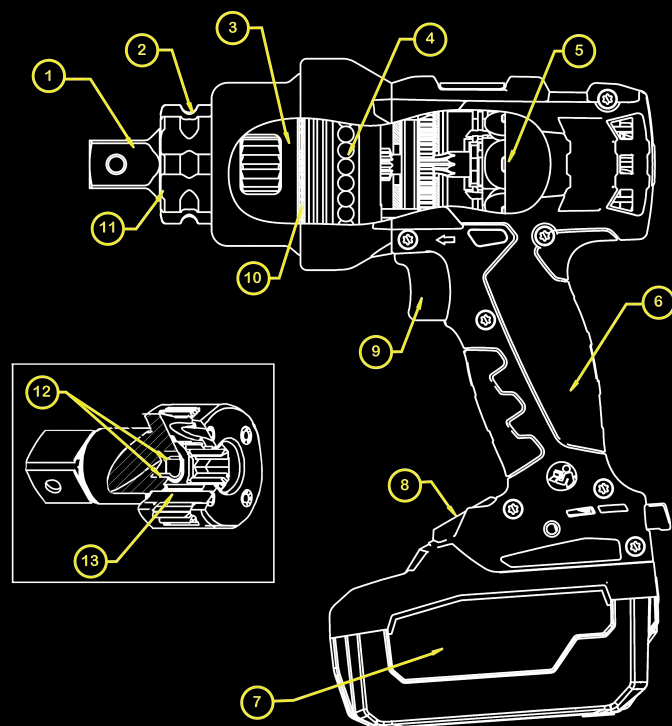
ENGINEERED TO MASTER ANY APPLICATION EFFORTLESSLY, YOUR ABILITY TO TORQUE INDUSTRIAL FASTENERS IS A SIMPLE AND QUICK CHARGE AWAY. FULLY CHARGED IN UNDER 60 MINUTES, THE VOLTA'S LITHIUM POWER WILL PROVIDE YOU WITH THE CAPABILITY TO TORQUE HUNDREDS OF FASTENINGS WITH NO HOSES OR CORDS TO LIMIT YOUR REACH. WITHIN THE VOLTA IS A DIGITAL MOTOR VECTORING SYSTEM THAT PROVIDES ACCURATE AND REPEATABLE TORQUE THROUGHOUT EACH MODEL'S FULL RANGE. THE VOLTA EXEMPLIFIES THE DURABILITY, RELIABILITY AND SAFETY THAT HAS EMBODIED EVERY INDUSTRIAL WRENCH CRAFTED BY TORCUP SINCE THE COMPANY'S FOUNDING IN 1996.

WWW.TORCUP.COM



THE POWER INSIDE

1. HARDENED ALLOY STEEL FOR DURABILITY AND LONG CYCLE LIFE
2. BEARINGS SUPPORT THE LOADS EXPERIENCED AT THE SQUARE DRIVE
3. MULTI-STAGE PLANETARY GEAR SYSTEMS WITH OPTIMIZED TOOTH DESIGN
4. SMOOTH BALL BEARING ROTATION OF THE GEARBOX HOUSING INDEPENDENT FROM THE MOTOR HANDLE
5. HIGH-EFFICIENCY BRUSHLESS MOTOR
6. ERGONOMIC GLASS-FILLED NYLON HANDLE WITH A DURABLE SLIP-RESISTANT OVERMOLD
7. 18V 7.0 AH LIHD BATTERY THAT PROVIDES EXTENDED RUN-TIME
8. LCD DISPLAY FOR SETTING AND VIEWING TORQUE AND UNITS
9. SOFT-START TRIGGER
10. THRUST BEARING BETWEEN STAGES ISOLATE THE MOTOR WHEN USED IN ALL ORIENTATIONS
11. O-RINGS SEAL GREASE IN WHILE KEEPING DIRT AND WATER OUT
12. GEARS RUN ON LOW FRICTION, HIGH STRENGTH BEARING SLEEVES
13. TOOL STEEL PINS IN EACH STAGE CARRIER

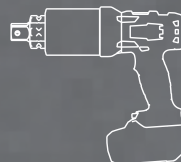




VT-500 **SINGLE SPEED**
TORQUE RANGE 120-500 LBF-FT
FREE SPEED 12-20 RPM



VT-1000 **SINGLE SPEED**
TORQUE RANGE 240-1000 LBF-FT
FREE SPEED 2-8 RPM



VT-2000 **SINGLE SPEED**
TORQUE RANGE 500-2000 LBF-FT
FREE SPEED 1-5 RPM

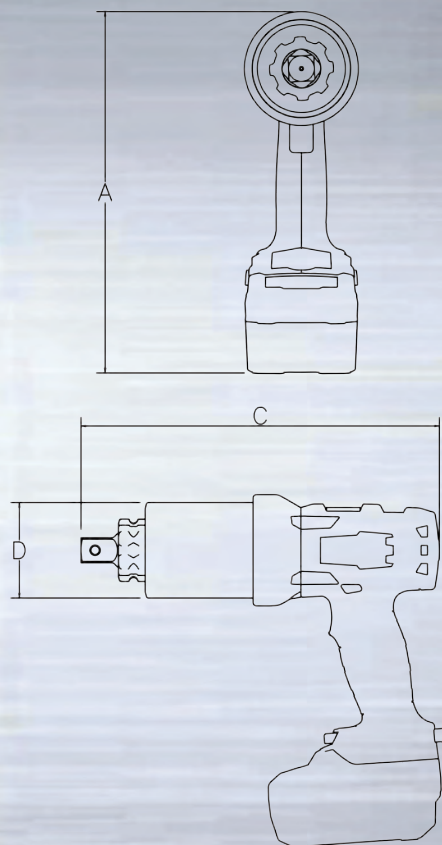


VT-3000 **SINGLE SPEED**
TORQUE RANGE 750-3000 LBF-FT
FREE SPEED 0.5-2 RPM



VT-6000 **SINGLE SPEED**
TORQUE RANGE 1200-6000 LBF-FT
FREE SPEED 0.9-1.2 RPM

POWER ENGINEERED



MODEL NUMBER	VT-500	VT-1000	VT-2000	VT-3000	VT-6000
SQUARE DRIVE	3/4"	1"	1"	1"	1 1/2"
MIN. TORQUE (lbf-ft)	120	240	500	750	1200
MAX TORQUE (lbf-ft)	500	1000	2000	3000	6000
MIN. TORQUE (Nm)	160	330	680	1020	1626
MAX TORQUE (Nm)	670	1350	2710	4030	8133
HEIGHT A (w/ battery) (in)	10.40"	10.40"	10.40"	10.40"	11.39"
HEIGHT A (w/ battery) (mm)	265	265	265	265	289
LENGTH C (in)	8.86"	10.97"	11.45"	13.94"	14.86"
LENGTH C (mm)	225	279	291	355	377
DIAMETER D (in)	2.56"	2.85"	3.09"	3.75"	5.00"
DIAMETER D (mm)	65	72.4	78.5	95.3	127
WEIGHT (w/o reaction arm & battery) (lbs)	8.3	11.5	13.1	19.6	33.5
WEIGHT (w/o reaction arm & battery) (kg)	3.8	5.2	5.9	8.9	15.2
WEIGHT (w/ reaction arm & battery) (lbs)	10.4	14.5	15.9	22.5	43.3
WEIGHT (w/ arm & battery) (kg)	4.7	6.6	7.2	10.2	19.6
RPM at Min. Torque	12	2	1	0.5	0.9
RPM at Max Torque	20	8	5	2	1.2

Charger Requirements: 110 - 120 V (50-60 Hz)
and 230 - 240 V (50-60 Hz)



VT

**SERIES
BATTERY-POWERED
TORQUE WRENCH**

PORTABLE - LITHIUM BATTERY POWER

UNIVERSAL - GLOBAL CHARGING PLATFORM

REPEATABLE - HIGH-EFFICIENCY BRUSHLESS MOTOR

**SLIDING STRAIGHT
REACTION ARM**



**STRAIGHT
REACTION ARM**



**LONG EXTENDED
REACTION ARM**



**NOSE
EXTENSION**



VOLTA CHARGER



VOLTA BATTERY



torcup

Worldwide Headquarters

1025 Conroy Place

Easton, PA 18040 USA

TOLL FREE: 1-888-TorcUP-1

TELEPHONE: 1-610-250-5800

FAX: 1-610-250-2700

www.torcup.com



**TOOL
CARRYING
CASE**



**CHARGER
CARRYING
CASE**



TorcUP products are subject to continual development and TorcUP reserves the right to make changes to the specifications and design of their products without prior notice. All rights are reserved. Reproduction in whole or in part without permission of TorcUP Inc. is prohibited.



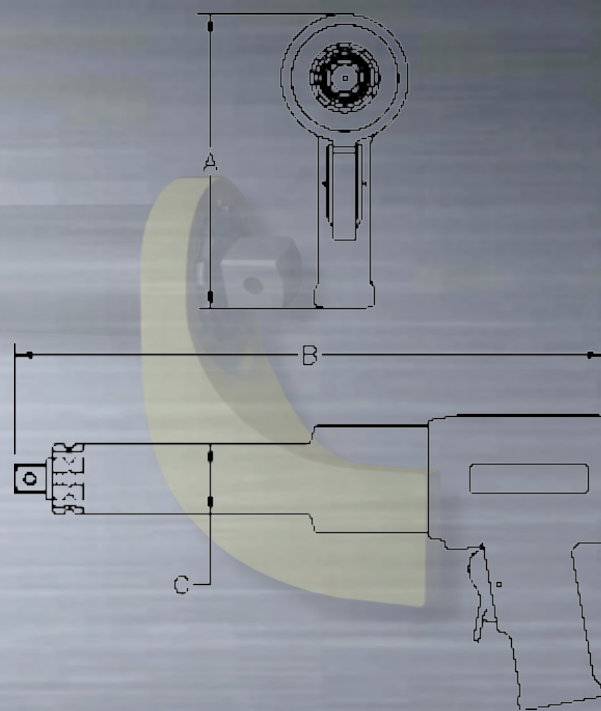
TorquiiTM

**EXTENDING
YOUR REACH**

RP/VT INTEGRAL EXTENSION

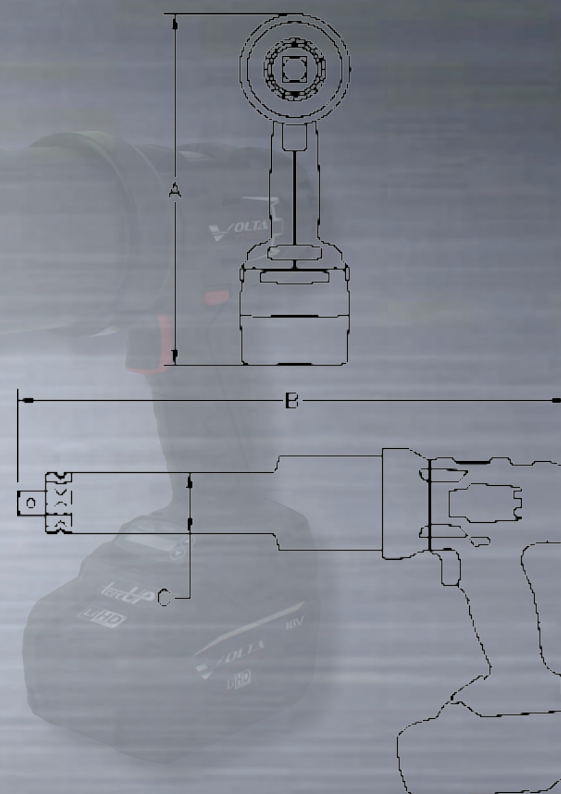
RP E6

MODEL NUMBER	RP-1000E6
SQUARE DRIVE	3/4"
MIN. TORQUE (LBF-FT)	148
MAX. TORQUE (LBF-FT)	1030
MIN. TORQUE (NM)	201
MAX. TORQUE (NM)	1396
HEIGHT A (IN)	7.89"
HEIGHT A (MM)	200.4
LENGTH B (IN)	15.79"
LENGTH B (MM)	401.2
DIAMETER C (IN)	1.86"
DIAMETER C (MM)	42.2
WEIGHT (LBS) W/ REACTION ARM	15
WEIGHT (KG) W/ REACTION ARM	6.8
RPM @ 10 PSI	7
RPM @ MAX PSI	15
TOOL MAX PSI	70



VT E6

MODEL NUMBER	VT-1000E6
SQUARE DRIVE	3/4"
MIN. TORQUE (LBF-FT)	240
MAX TORQUE (LBF-FT)	1000
MIN. TORQUE (NM)	330
MAX TORQUE (NM)	1350
HEIGHT A (W/ BATTERY) (IN)	10.40"
HEIGHT A (W/ BATTERY) (MM)	265
LENGTH B (IN)	16.49"
LENGTH B (MM)	418.8
DIAMETER C (IN)	1.86"
DIAMETER C (MM)	47.2
WEIGHT (W/ REACTION ARM & BATTERY) (LBS)	18.5
WEIGHT (W/ REACTION ARM & BATTERY) (KG)	8.4
RPM AT MIN. TORQUE	2
RPM AT MAX TORQUE	8



TorUP™

TorUP Inc. 1025 Conroy Place Easton, PA. 18040 USA 1-888-TorUP-1 +1 610-250-5800
www.TorUP.com Sales@TorUP.com

TorUP products are subject to continual development and TorUP reserves the right to make changes to the specifications and design of their products without prior notice. All rights are reserved. Reproduction in whole or in part without permission of TorUP Inc. is prohibited.



**TORQUE
TOOLING
SOLUTIONS FOR
TRANSPORTATION
APPLICATIONS**



TRANSPORTATION

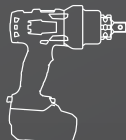
COMMERCIAL VEHICLE TORQUE TOOLING

VT

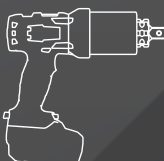
VOLTA™

BATTERY POWERED TORQUE WRENCH

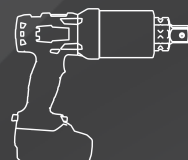
VT-500 SINGLE SPEED
TORQUE RANGE 120-500 LBF-FT
FREE SPEED 12-20 RPM



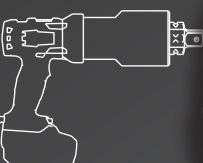
VT-1000 SINGLE SPEED
TORQUE RANGE 240-1000 LBF-FT
FREE SPEED 2-8 RPM



VT-2000 SINGLE SPEED
TORQUE RANGE 500-2000 LBF-FT
FREE SPEED 1-5 RPM



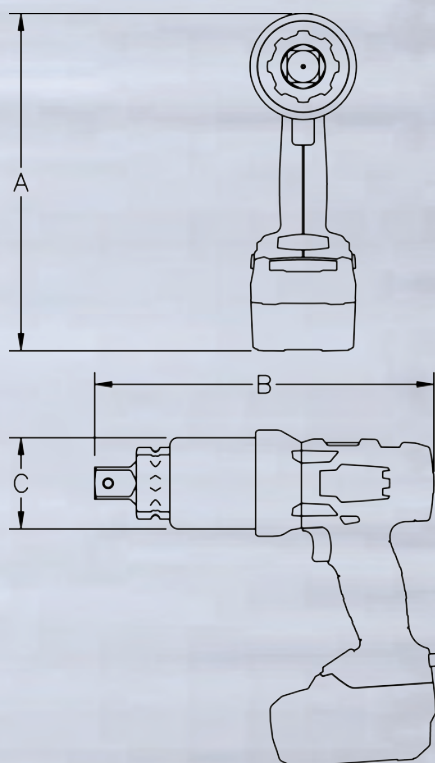
VT-3000 SINGLE SPEED
TORQUE RANGE 750-3000 LBF-FT
FREE SPEED 0.5-2 RPM



Charger Requirements: 110 - 120 V (50-60 Hz)
and 230 - 240 V (50-60 Hz)



SPEED CHARGER



MODEL NUMBER	VT-500	VT-1000	VT-2000	VT-3000
SQUARE DRIVE	3/4"	1"	1"	1"
MIN. TORQUE (LBF-FT)	120	240	500	750
MAX TORQUE (LBF-FT)	500	1000	2000	3000
MIN. TORQUE (NM)	160	330	680	1020
MAX TORQUE (NM)	670	1350	2710	4030
HEIGHT A (W/ BATTERY) (IN)	10.40"	10.40"	10.40"	10.40"
HEIGHT A (W/ BATTERY) (MM)	265	265	265	265
LENGTH B (IN)	8.86"	10.97"	11.45"	13.94"
LENGTH B (MM)	225	279	291	355
DIAMETER C (IN)	2.56"	2.85"	3.09"	3.75"
DIAMETER C (MM)	65	72.4	78.5	95.3
WEIGHT (W/ REACTION ARM & BATTERY) (LBS)	10.4	14.5	15.9	22.5
WEIGHT (W/ REACTION ARM & BATTERY) (KG)	4.7	6.6	7.2	10.2
RPM AT MIN. TORQUE	12	2	1	0.5
RPM AT MAX TORQUE	20	8	5	2

RP

RAPTOR™

PNEUMATIC POWERED TORQUE WRENCH



FRL UNIT



RP-500 **SINGLE SPEED**
TORQUE RANGE 78-530 LBF-FT
FREE SPEED 16.5-44 RPM



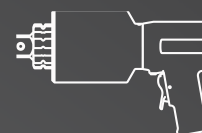
RP-1000 **SINGLE SPEED**
TORQUE RANGE 148-1030 LBF-FT
FREE SPEED 7-15 RPM



RP-2000 **SINGLE SPEED**
TORQUE RANGE 231-2015 LBF-FT
FREE SPEED 3.5-9 RPM

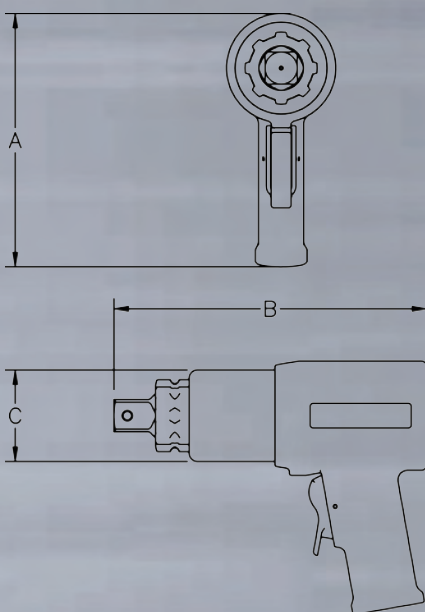


RP-3000 **SINGLE SPEED**
TORQUE RANGE 484-3070 LBF-FT
FREE SPEED 1.75-4 RPM



RP-6000 **SINGLE SPEED**
TORQUE RANGE 714-6000 LBF-FT
FREE SPEED 1.25-3 RPM

Air Pressure Requirements: 10-90 psi - Flow 45-55 CFM



MODEL NUMBER	RP-500	RP-1000	RP-2000	RP-3000	RP-6000
SQUARE DRIVE	3/4"	1"	1"	1"	1 1/2"
MIN. TORQUE (LBF-FT)	78	148	231	484	714
MAX. TORQUE (LBF-FT)	530	1030	2015	3070	6000
MIN. TORQUE (NM)	106	201	313	656	968
MAX. TORQUE (NM)	719	1396	2732	4162	8121
HEIGHT A (IN)	7.89"	7.89"	7.89"	8.06"	8.69"
HEIGHT A (MM)	200.4	200.4	200.4	204.7	220.7
LENGTH B (IN)	6.80"	8.87"	9.40"	11.62"	12.32"
LENGTH B (MM)	172.7	225.3	238.8	295.2	312.9
DIAMETER C (IN)	2.56"	2.85"	3.09"	3.75"	5.00"
DIAMETER C (MM)	65.0	72.4	78.5	95.3	127.0
WEIGHT (LBS) W/ REACTION ARM	12	15	19	23	39
WEIGHT (KG) W/ REACTION ARM	5.4	6.8	8.6	10.4	17.6
RPM @ 10 PSI	16.5	7	3.5	1.75	1.25
RPM @ MAX PSI	44	15	9	4	3
TOOL MAX PSI	80	70	90	65	90

WHEEL BOLTING



SUSPENSION BOLTING



ENGINE BOLTING



torcUP™

WORLDWIDE HEADQUARTERS
1025 CONROY PLACE
EASTON, PA 18040 USA
TOLL FREE: 1-888-TORCUP-1
TELEPHONE: 1-610-250-5800
FAX: 1-610-250-2700

WWW.TORCUP.COM



**SOCKET-TO-SOCKET
REACTION ARM**



**SLIDING REACTION
ARM**



**DD
REACTION ARM**



TorcUP products are subject to continual development and TorcUP reserves the right to make changes to the specifications and design of their products without prior notice. All rights are reserved. Reproduction in whole or in part without permission of TorcUP Inc. is prohibited.



Torquui
BACKUP
YOUR WRENCH

TBW BACKUP WRENCH

TBW

TBW SERIES BACKUP WRENCHES THE BEST BACKUP PLAN



DURABILITY

- AIRCRAFT QUALITY STEEL CONTRUCTION
- TOTALLY MECHANICAL - SIMPLE TO RELEASE
- CUSTOM DESIGNS TO FIT YOUR APPLICATIONS

SAFETY

- RELEASES WITH ZERO TENSION
- ELIMINATES STRIKER WRENCHES
- OPERATES SAFELY WITH GRIP HANDLE

WWW.TORCUP.COM



POWER ENGINEERED

PART #	SIZE	PART #	SIZE
BC-012	3/4"	BC-201	2 1/16"
BC-014	7/8"	BC-203	2 3/16"
BC-100	1"	BC-204	2 1/4"
BC-101	1 1/16"	BC-206	2 3/8"
BC-102	1 1/8"	BC-208	2 1/2"
BC-104	1 1/4"	BC-209	2 9/16"
BC-105	1 5/16"	BC-210	2 5/8"
BC-106	1 3/8"	BC-212	2 3/4"
BC-107	1 7/16"	BC-214	2 7/8"
BC-108	1 1/2"	BC-215	2 15/16"
BC-110	1 5/8"	BC-302	3 1/8"
BC-111	1 11/16"	BC-304	3 1/4"
BC-113	1 13/16"	BC-306	3 3/8"
BC-114	1 7/8"	BC-308	3 1/2"

PART #	SIZE	PART #	SIZE
BC-19M	19mm	BC-50M	50mm
BC-22M	22mm	BC-55M	55mm
BC-24M	24mm	BC-60M	60mm
BC-25M	25mm	BC-65M	65mm
BC-27M	27mm	BC-70M	70mm
BC-28M	28mm	BC-75M	75mm
BC-30M	30mm	BC-80M	80mm
BC-32M	32mm	BC-85M	85mm
BC-36M	36mm	BC-90M	90mm
BC-41M	41mm	BC-95M	95mm

Heavy Duty
Backup Wrench
Handle

PART #
TBW-1S

Available kits include: handle, ten backhold cartridges and carrying case.
Part #: TBW-SS Standard Part #: TBW-SM Metric



**WORLDWIDE SUPPLY
WORLDWIDE SUPPORT
WORLDWIDE INNOVATION**

TorcUP Inc. 1025 Conroy Place Easton, PA. 18040 USA 1-888-TorcUP-1 +1 610-250-5800
www.torcup.com sales@torcup.com

TorcUP products are subject to continual development and TorcUP reserves the right to make changes to the specifications and design of their products without prior notice. All rights are reserved. Reproduction in whole or in part without permission of TorcUP Inc. is prohibited.



torquii

**NEVER BE
SPREAD TOO THIN**

TFS FLANGE SPREADER

TFS

TFS SERIES FLANGE SPREADER THE JAWS OF BOLTING



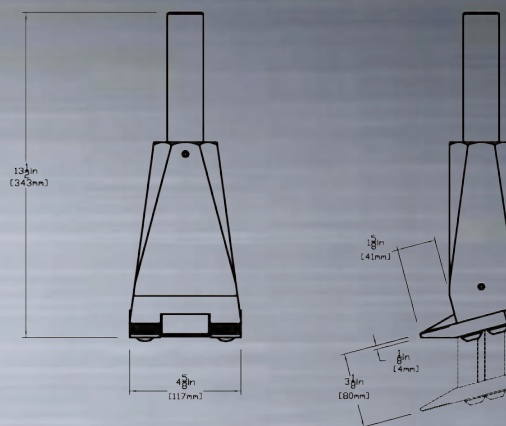
- HYDRAULICALLY POWERED
- LIGHTWEIGHT : ONLY 15.5 LBS (7.0 KG)
- JAWS OPEN PARALLEL
- NO DRIFT. THE UNIT SPREADS WHERE YOU PLACE IT
- EASY SINGLE OPERATOR OPERATION
- UNIVERSAL, ONE-SIZE-FITS-ALL DESIGN
- 10,000 LBS (4,535 KG) OF SPREADING FORCE
- FULL OPERATION SPREAD TO 3" (76.2MM)

WWW.TORCUP.COM



POWER ENGINEERED

Specifications	Standard	Metric
Weight TFS-10H	15.5 lbs	7.0 kg
Length TFS-10H	13.25"	33.6 mm
Width of Feet	4.5"	114 mm
Width of Body	4.0"	101mm
Tips Closed	.09"	2.3 mm
Tips Open	3.0"	76.2 mm
Tip Penetration	1.5"	38.1 mm
Rated Force	10,000 lbs	4,535 kg



WORLDWIDE SUPPLY • WORLDWIDE SUPPORT • WORLDWIDE INNOVATION

TorcuP™

TorcUP Inc. 1025 Conroy Place Easton, PA. 18040 USA 1-888-TorcUP-1 +1 610-250-5800
www.torcup.com sales@torcup.com

TorcUP products are subject to continual development and TorcUP reserves the right to make changes to the specifications and design of their products without prior notice. All rights are reserved. Reproduction in whole or in part without permission of TorcUP Inc. is prohibited.



Torcui
SPLITS YOUR
JOB-TIME IN HALF

TNS NUT SPLITTER

TNS

TNS SERIES NUT SPLITTER CUT IT LOOSE

THE TORCUP TNS SERIES NUT SPLITTER IS THERE WHEN YOU JUST CANNOT TURN THE NUT. ELIMINATING THE NEED FOR TORCHES AND OTHER LESS PREDICTABLE OPTIONS, THE TNS SERIES NUT SPLITTER IS DURABLE, RELIABLE AND SAFE. ITS SIMPLE DESIGN AND WIDE RANGE MAKE IT THE MOST IN-DEMAND NUT SPLITTER AVAILABLE. THE TNS SERIES NUT SPLITTER IS MADE IN THE USA AND PROVIDES AN UNCOMPLICATED SOLUTION TO WHAT CAN BE A DIFFICULT ISSUE.



THE RIGID DESIGN

EASY SETS UP AND CUTS WITHIN MINUTES

SAFE NO SPARKS, NO FLAMES, NO FLYING FRAGMENTS

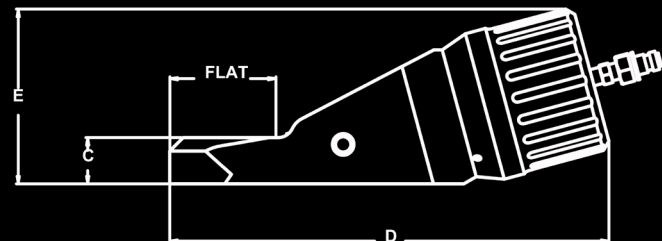
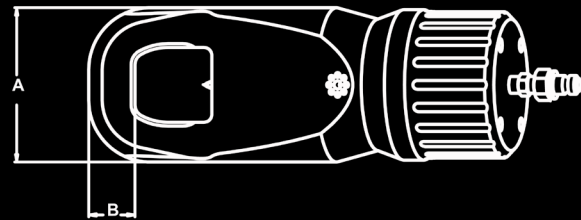
FAST CUTS NUTS IN SECONDS COMPARED TO HOURS WITH TORCH

FLEXIBLE TOOL HEAD FITS ALL API AND ANSI FLANGES

VERSATILE CUTS NUTS WITHOUT ANY DAMAGE TO STUD

FOR PEACE OF MIND...

WARRANTY CARRIES 13 MONTH FACTORY WARRANTY FROM DEFECTS IN MATERIAL AND/OR WORKMANSHIP (EXCLUDES WEAR PARTS SUCH AS CHISELS)





WWW.TORCUP.COM

POWER ENGINEERED

PART NUMBER	A	B	C	D	E	FLAT	CHISEL	RANGE
TNS-012 (in)	2.00	0.40	0.63	6.71	2.76	1.11	TNS-10T-CHISEL	1/2 - 3/4
TNS-012 (mm)	50.8	10.2	15.9	170.4	70.1	28.2		12-19
TNS-100 (in)	2.25	0.40	0.72	6.94	2.77	1.3	TNS-10T-CHISEL	13/16 - 1
TNS-100 (mm)	57.2	10.2	18.3	176.3	70.4	33		20-25
TNS-104 (in)	3.75	1.00	1.13	11.79	5.07	2.63	TNS-30T-CHISEL	1 1/16 - 1 1/4
TNS-104 (mm)	95.3	25.4	28.6	299.5	128.8	66.7		27-32
TNS-108 (in)	3.75	1.13	1.13	12.19	5.08	2.53	TNS-30T-CHISEL	1 5/16 - 1 1/2
TNS-108 (mm)	95.3	28.7	28.7	309.6	129.0	64.3		33-38
TNS-112 (in)	4.50	1.38	1.25	13.95	5.71	3.23	TNS-50T-CHISEL	1 9/16 - 1 3/4
TNS-112 (mm)	114.3	34.9	31.8	354.3	145.0	82.0		39-45
TNS-200 (in)	5.00	1.50	1.5	14.23	5.68	3.52	TNS-50T-CHISEL	1 13/16 - 2
TNS-200 (mm)	127	38.1	38.1	361.4	144.3	89.4		46-50
TNS-208 (in)	6.25	1.50	2.00	18.19	7.75	3.63	TNS-75T-CHISEL	2 1/16 - 2 1/2
TNS-208 (mm)	158.8	38.1	50.8	462	196.9	92.2		50-63
TNS-300 (in)	3.50	1.53	2.50	18.57	7.70	4.50	TNS-75T-CHISEL	2 9/16 - 3
TNS-300 (mm)	165.1	38.8	63.5	471.7	195.6	114.3		63-76



HP100

HYDRAULIC HAND PUMP

Features

- Single Acting / Single Hydraulic Port
- Two-stage operation which reduces user fatigue
- Internal pressure relief valve for overload protection
- Large oil capacity to power a wide range of tools
- Constructed of high strength lightweight aluminum alloy
- Functions in horizontal and vertical positions
- Maximum working pressure: 10,000 psi / 700 bar

AP100

HYDRAULIC AIR PUMP

Features

- Single Acting / Single Hydraulic Port
- Pressure relief valve for overload protection
- Required air pressure range: 110-175psi. / 7.5-12 bar
- Dust cover protection for the release control valve
- High strength reinforced alloy reservoir
- Maximum working pressure: 10,000 psi / 700 bar



EP100

ELECTRIC PUMP

Features

- Single Acting / Single Hydraulic Port
- Quiet operation meets OSHA regulations (80dBA)
- 2 speed operation allows for faster cylinder advance
- Internal filter keeps contamination from damaging pump
- 10 ft. remote pendant switch to control motor on/off
- Maximum working pressure: 10,000 psi / 700 bar



Worldwide Headquarters

1025 Conroy Place
 Easton, PA 18040 USA
 TOLL FREE: 1-888-TorcUP-1
 TELEPHONE: 1-610-250-5800
 FAX: 1-610-250-2700
www.torcup.com

